



Norwegian Ministry
of Petroleum and Energy

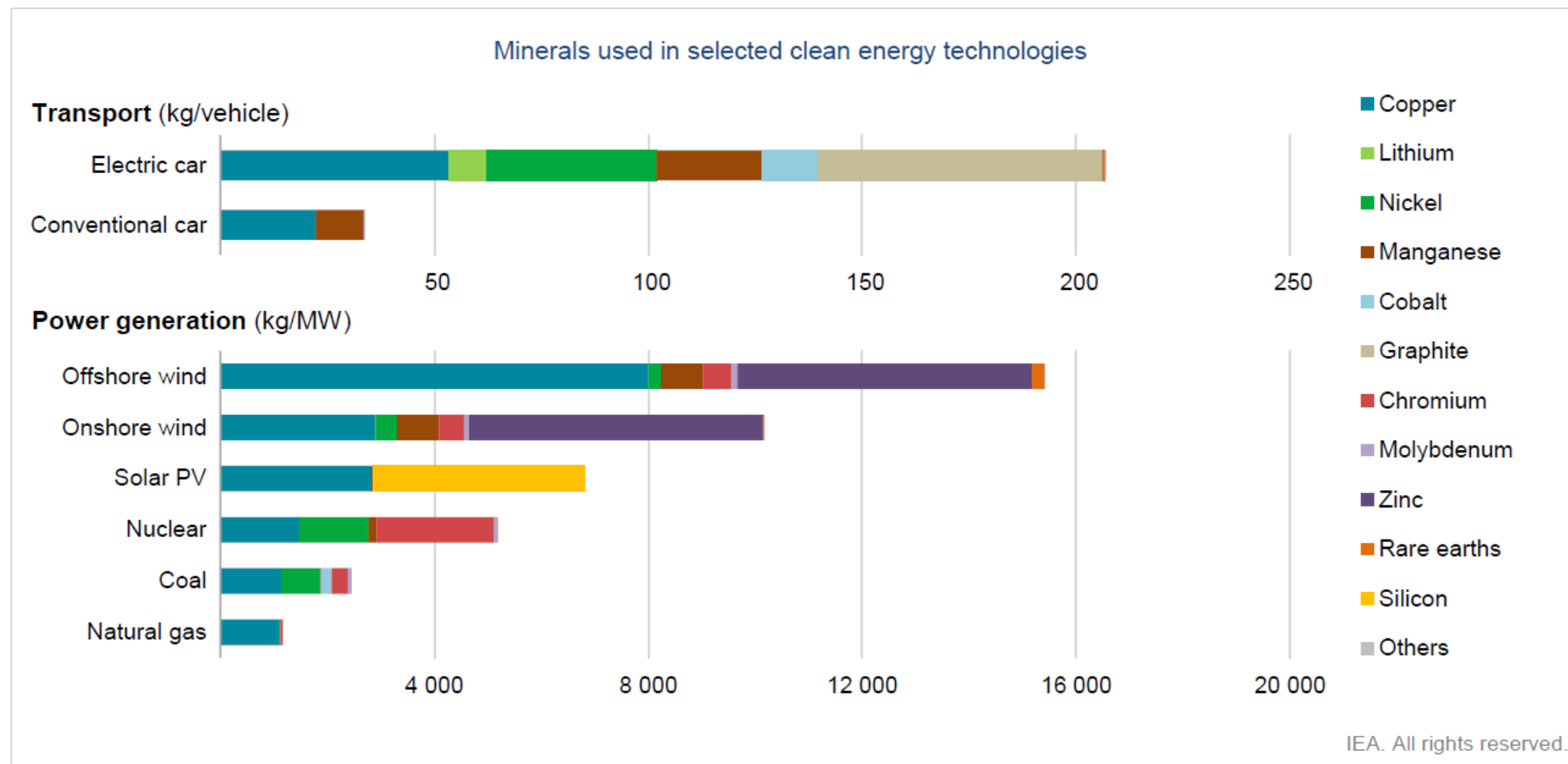
Management of Seabed Minerals on the Norwegian Continental shelf

June 3, 2021

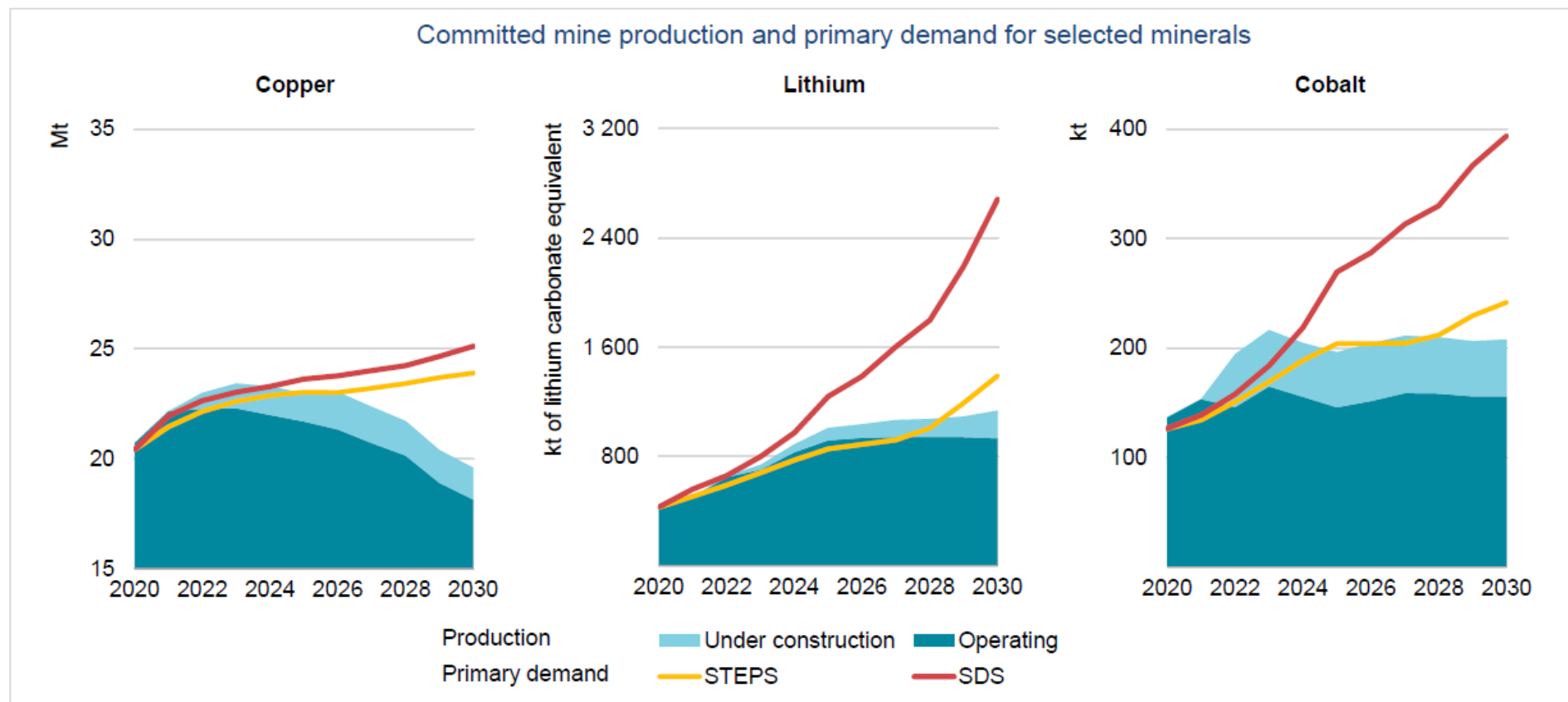
Cecilie Myklatun, Chief Specialist



The rapid deployment of clean energy technologies as part of energy transitions implies a significant increase in demand for minerals



Energy transitions require strong growth in investment in mineral supplies to keep up with the pace of demand growth.



Source: IEA



Management of seabed mineral activity on the Norwegian Continental Shelf

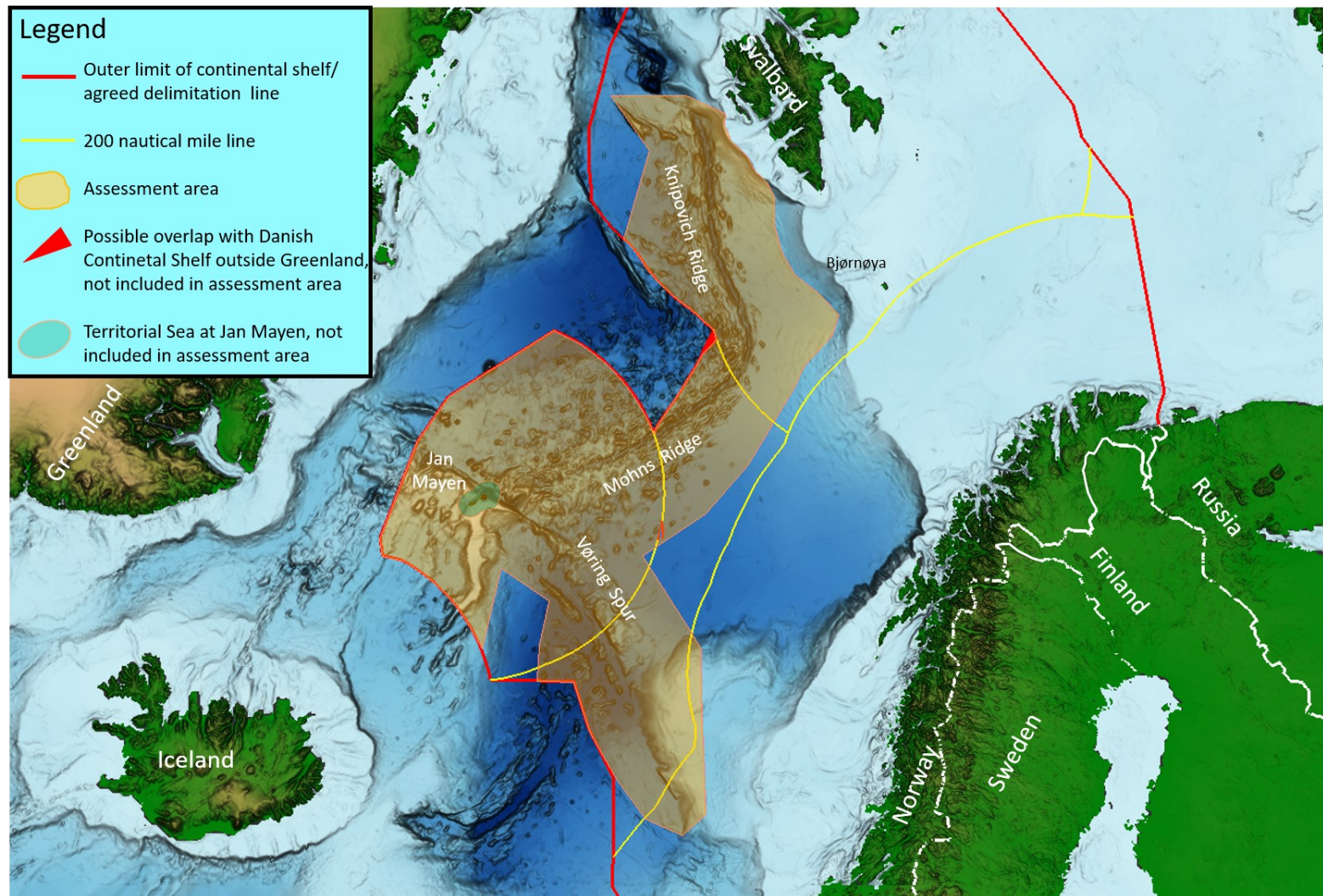
- The Government has initiated an opening process for mineral activity on the NCS, including an impact assessment
- Ministry of Petroleum and Energy responsible for the process
- The Petroleum Directorate (NPD) assists the Ministry and co-ordinates the impact assessment process



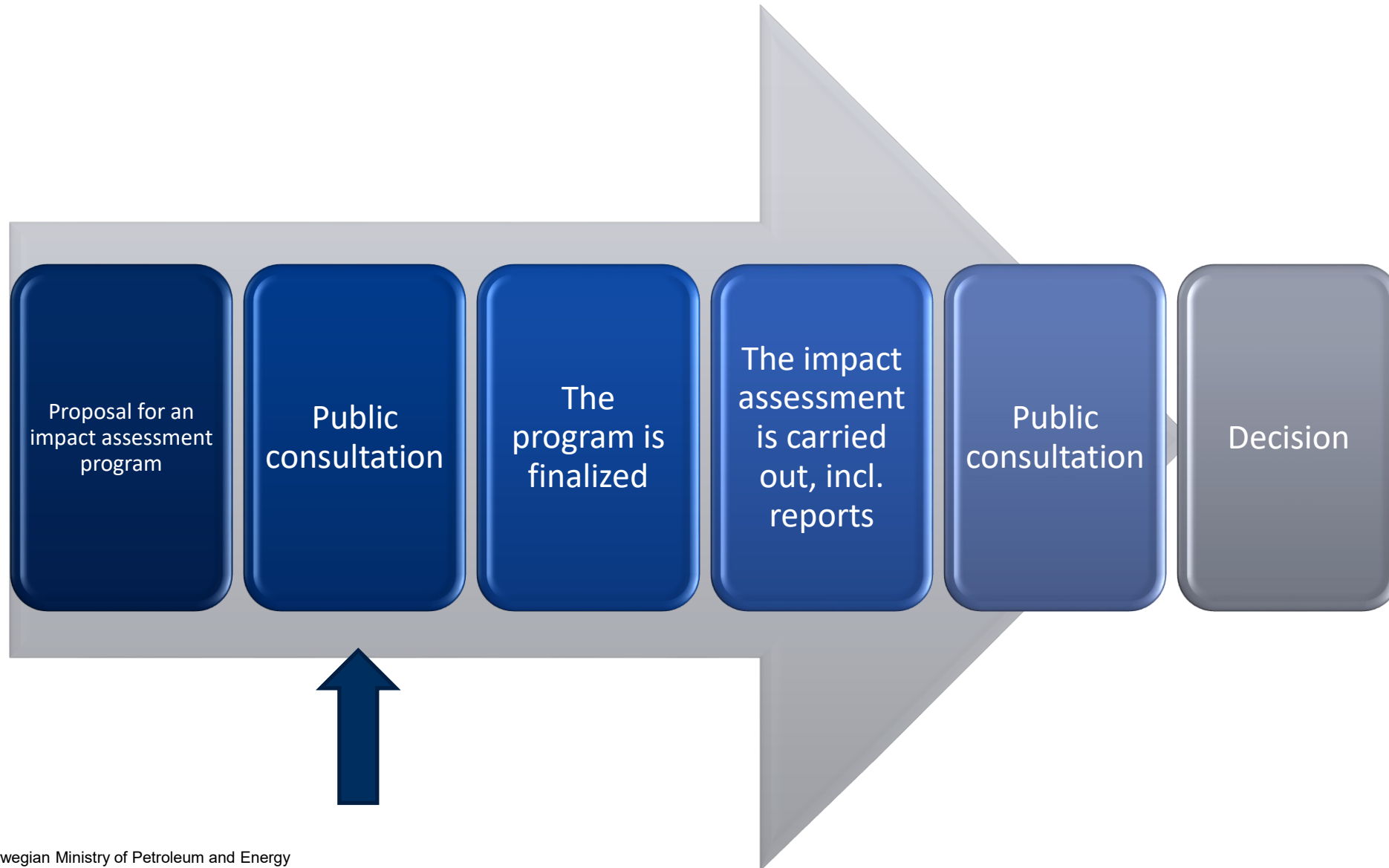
Prime Minister Erna Solberg and minister of petroleum and energy Tina Bru announce that the Government has initiated an opening process for mineral activity on the Norwegian continental shelf. Photo: MPE



Area defined for an impact assessment



Opening process – status and further process



Program for the impact assessment

- According to the Seabed Minerals Act the impact assessment shall *"highlight which effects a potential opening could have for the environment, as well as the expected impact on business, economic and social factors."*
- A program proposal for the impact assessment has been submitted for public consultation
- Main topics proposed:
 - Exploration and extraction; status, development trends and possibilities
 - Description of environmental issues and knowledge base
 - Environmental impact and relevant mitigation measures
 - Expected impact on business and relevant mitigation measures
 - Social and economic impact



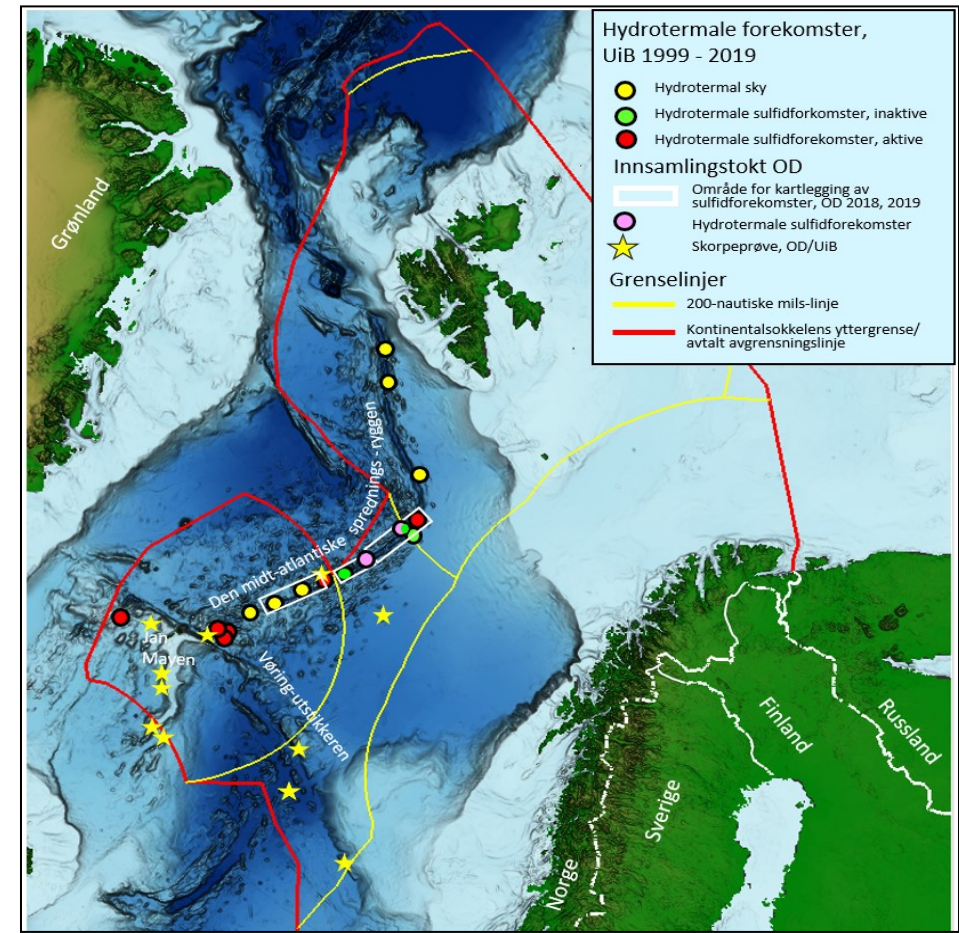
Program for the impact assessment cont.

- 150 recipients, including state agencies, scientific institutions, interest groups and companies, but open to all interested parties
- Ensures an open, inclusive and transparent process and that all relevant issues are addressed in the impact assessment
- More than 50 replies - published on the Ministry's webpage
- We are in the process of going through the comments received, with the aim of finalizing the program before summer



Resource assessment

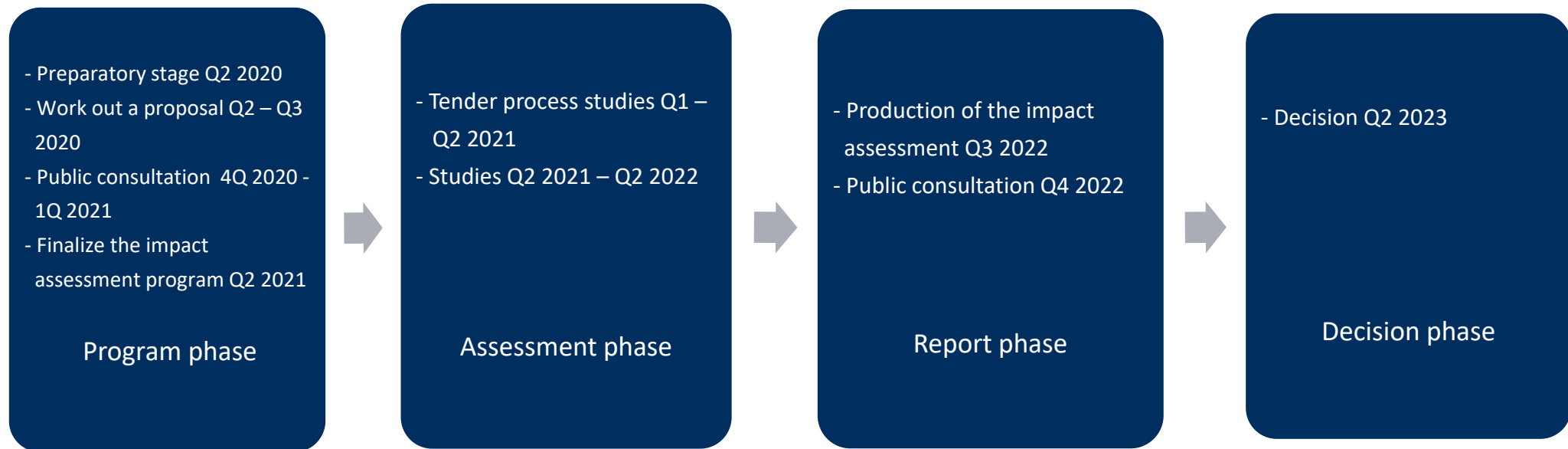
- Based on collected data the NPD is carrying out a resource assessment of the potential for seabed minerals on the NCS
- 30 million NOK have been granted to mapping of seabed minerals in 2021
- NPD is planning a mapping expedition to the Knipovich ridge in 2021
- The resource assessment will be part of the basis for decision on opening areas on the NCS for mineral activity



Source: NPD



Time line for the opening process





Norwegian Ministry
of Petroleum and Energy

Thank you for the attention!

