

How **Onboard Wireless Connectivity** has the power to transform the maritime industry


HAVlunch

19. November 2020

SCAN  REACH





 1hour 22min after the explosion:

"We are still not sure that all passengers are evacuated - Now starting a search through all cabins."

Bernt Olsvik, Ålesund fire department
<https://www.tv2.no/a/3585358/>







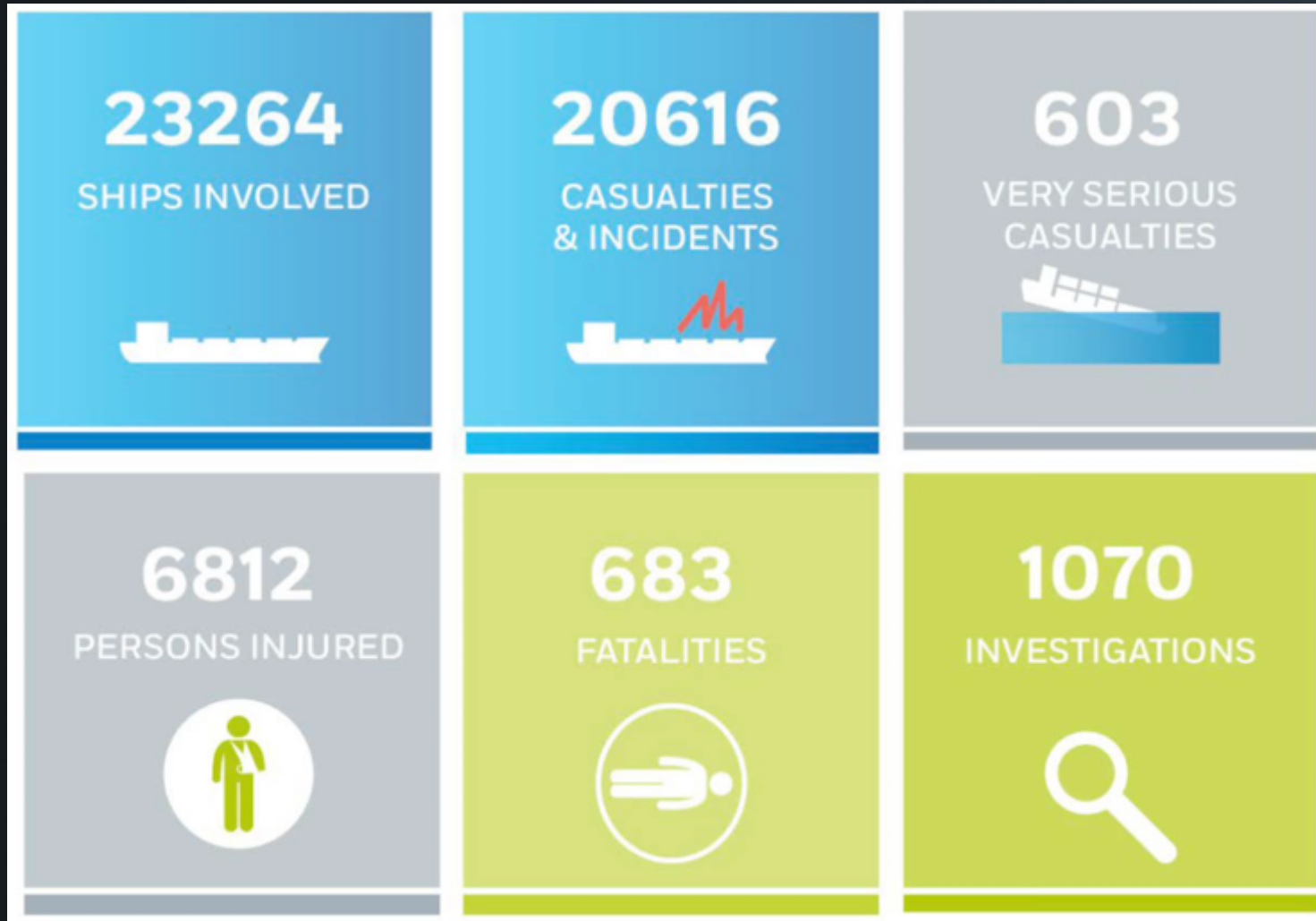








Overview of marine casualties and incidents (2011-2018)



Wireless connectivity

has totally changed our
lives, cities and the
competitive landscape

An aerial, grayscale photograph of a large harbor filled with numerous ships of various sizes. In the background, a dense city skyline is visible across the water. The water shows some wake from the ships.

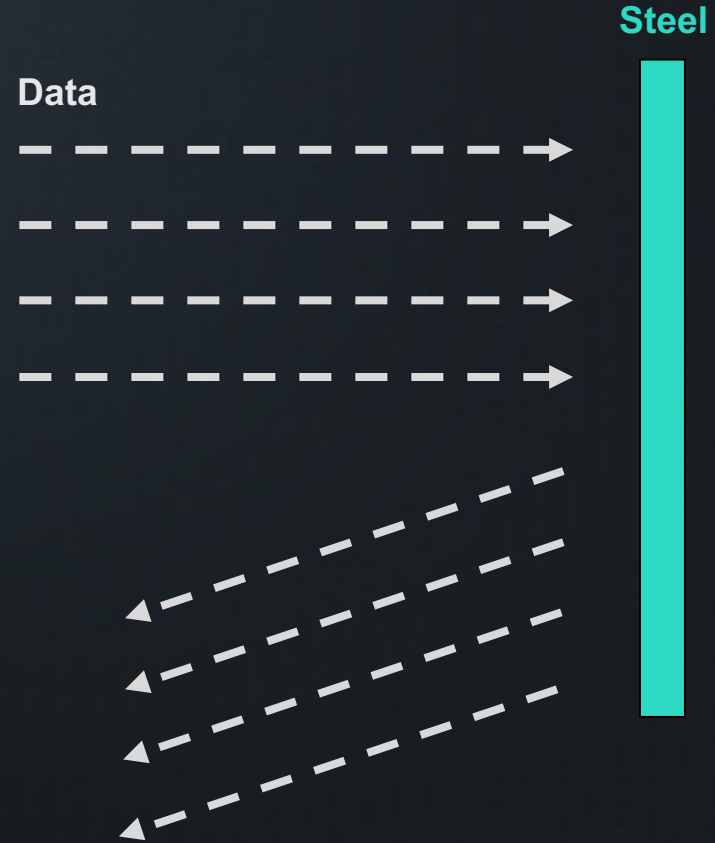
**This is not the
case for the
maritime industry.**

**It is mainly analogue and
unoptimized**

Why? Faraday Cage



Why? Faraday Cage



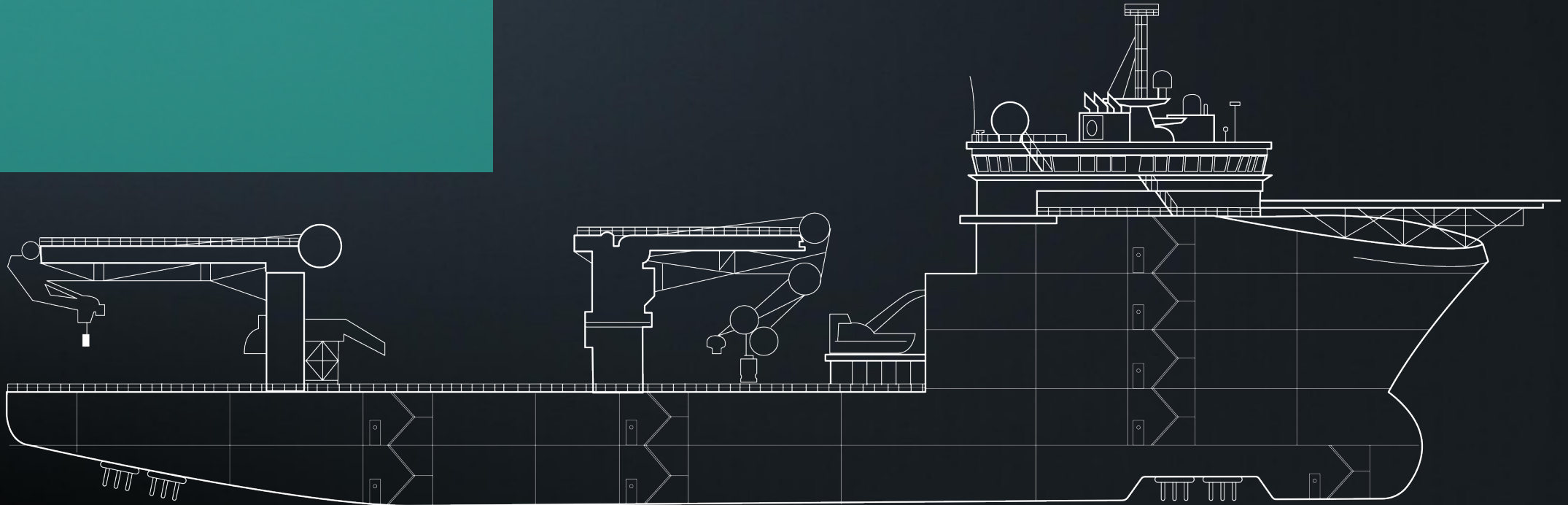
Why? Faraday Cage

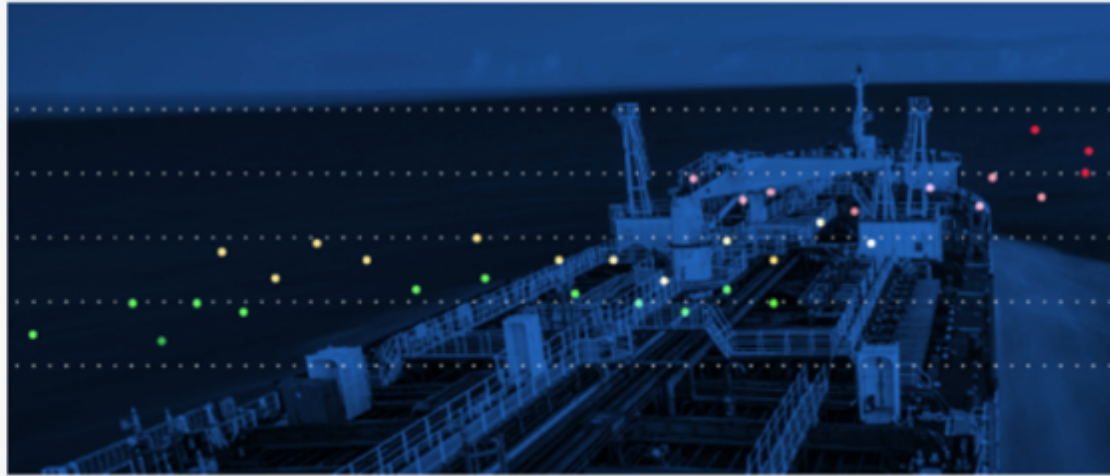


Why? Faraday Cage



A ship is a
Faraday cage





A \$1 billion problem that needs solving

Published on June 2, 2019



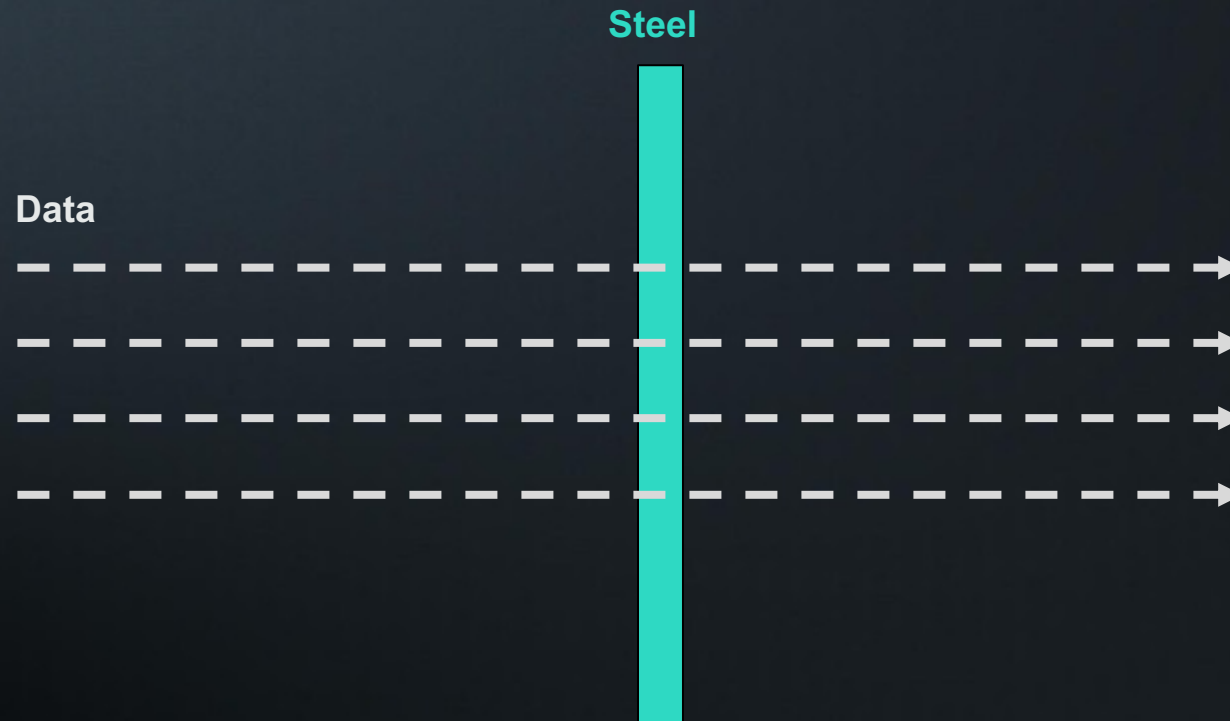
Melvin Mathews

"Empower, liberate & see magic happen"

38 articles

✓ Following

5 years / 100000+hrs / 100mill



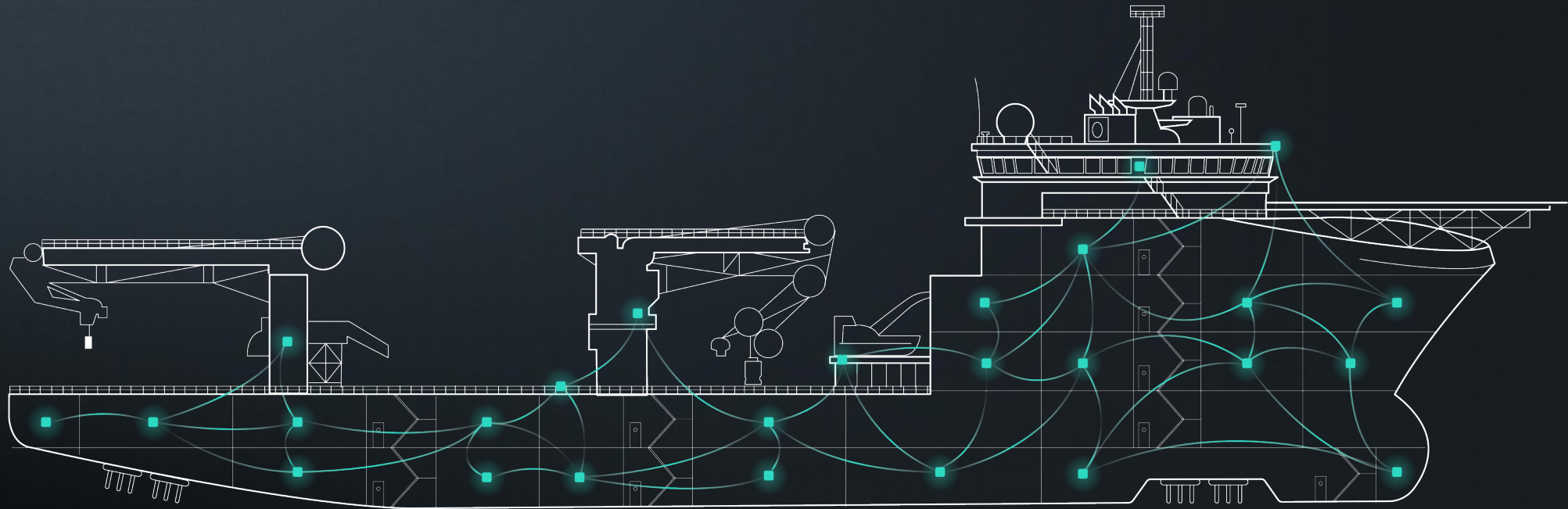
Full Onboard Wireless Connectivity

Plug & Play / No cabling



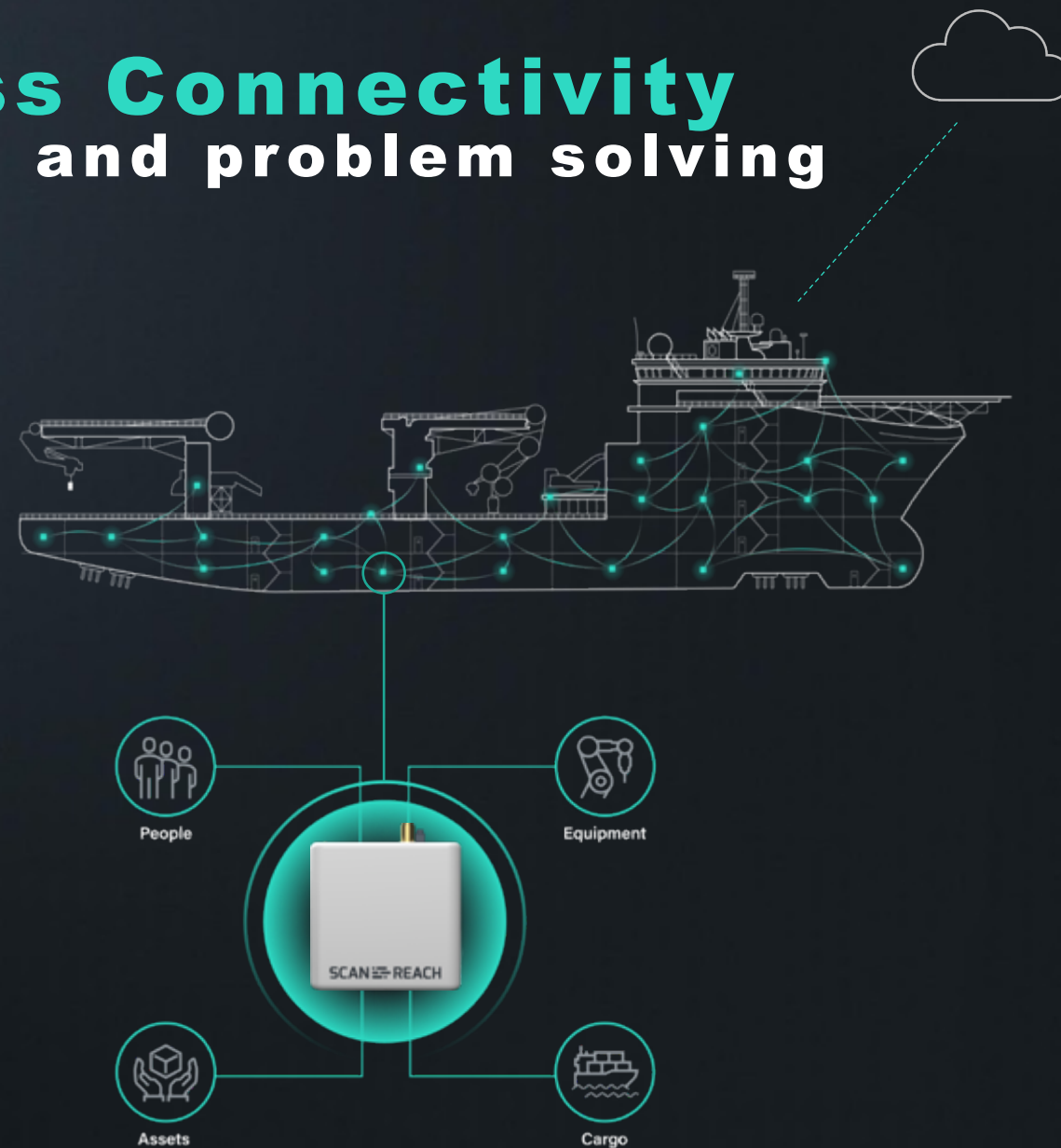
Full Onboard Wireless Connectivity

Plug & Play / No cabling



Full Onboard Wireless Connectivity

Key enabler for innovation and problem solving



Components

Connecting wirelessly to people and assets onboard any vessel, and get the benefits of efficient emergency handling, training and operations.



DIGITAL INTERFACES

Designed to deliver instant situation overview with the user's goals in mind.

WIRELESS NODES

The building block for full Onboard Wireless Connectivity.

WEARABLE

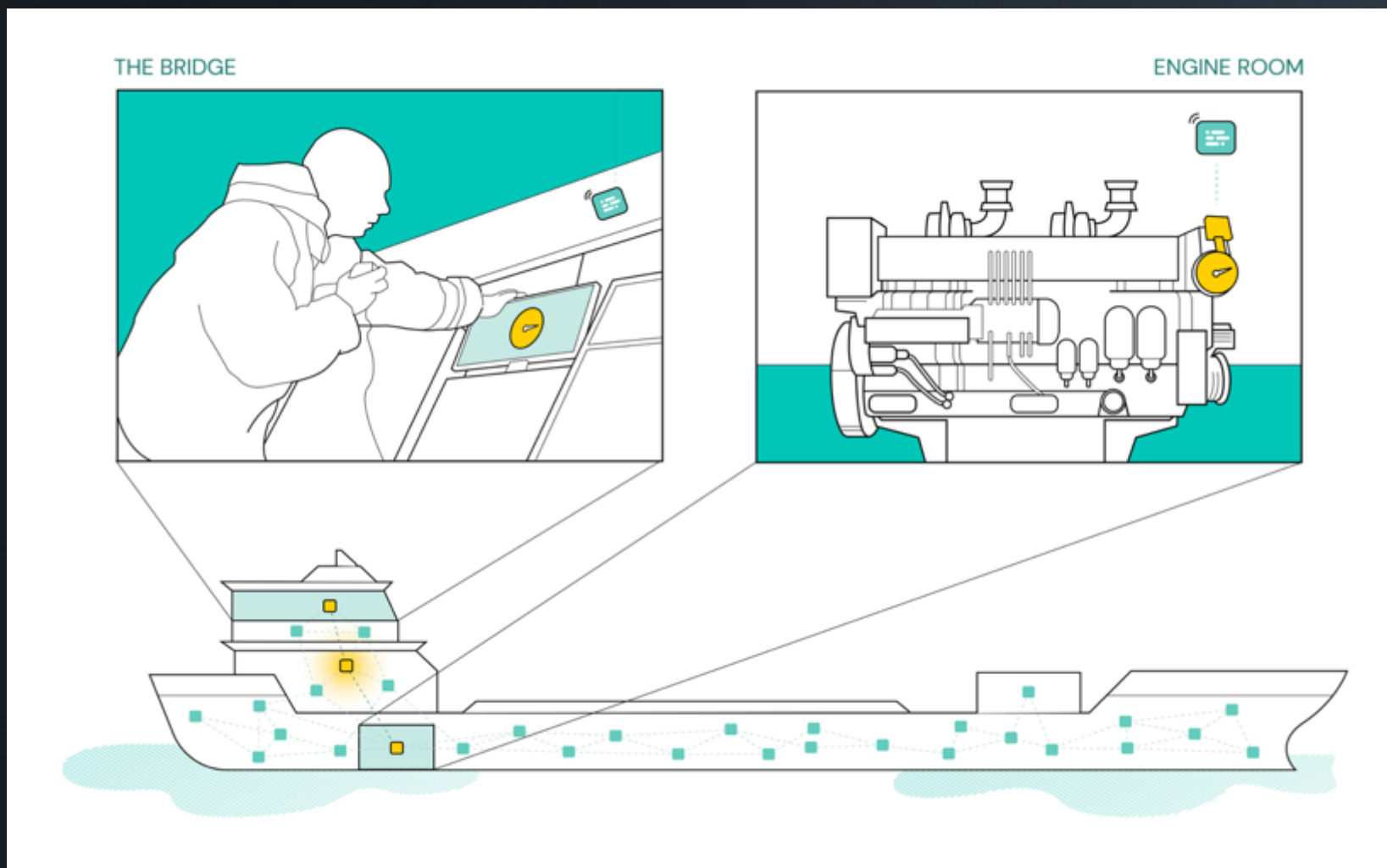
Personal distress alarm and position tracking during emergency & training.

Save lives, reduce accidents and improve performance

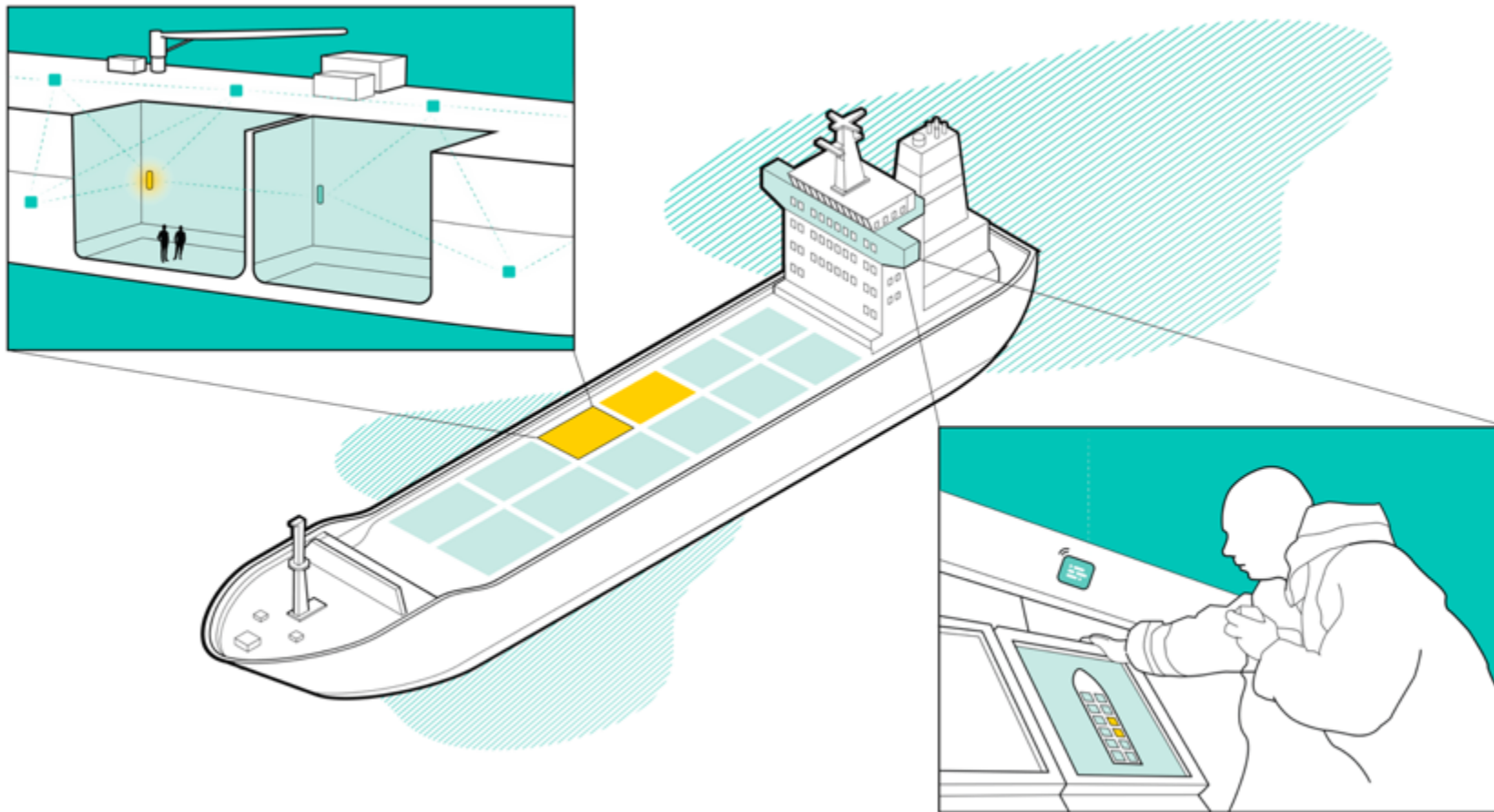
Connecting wirelessly to people and assets onboard any vessel, and get the benefits of efficient emergency handling, training and operations.



Realtime fuel monitoring



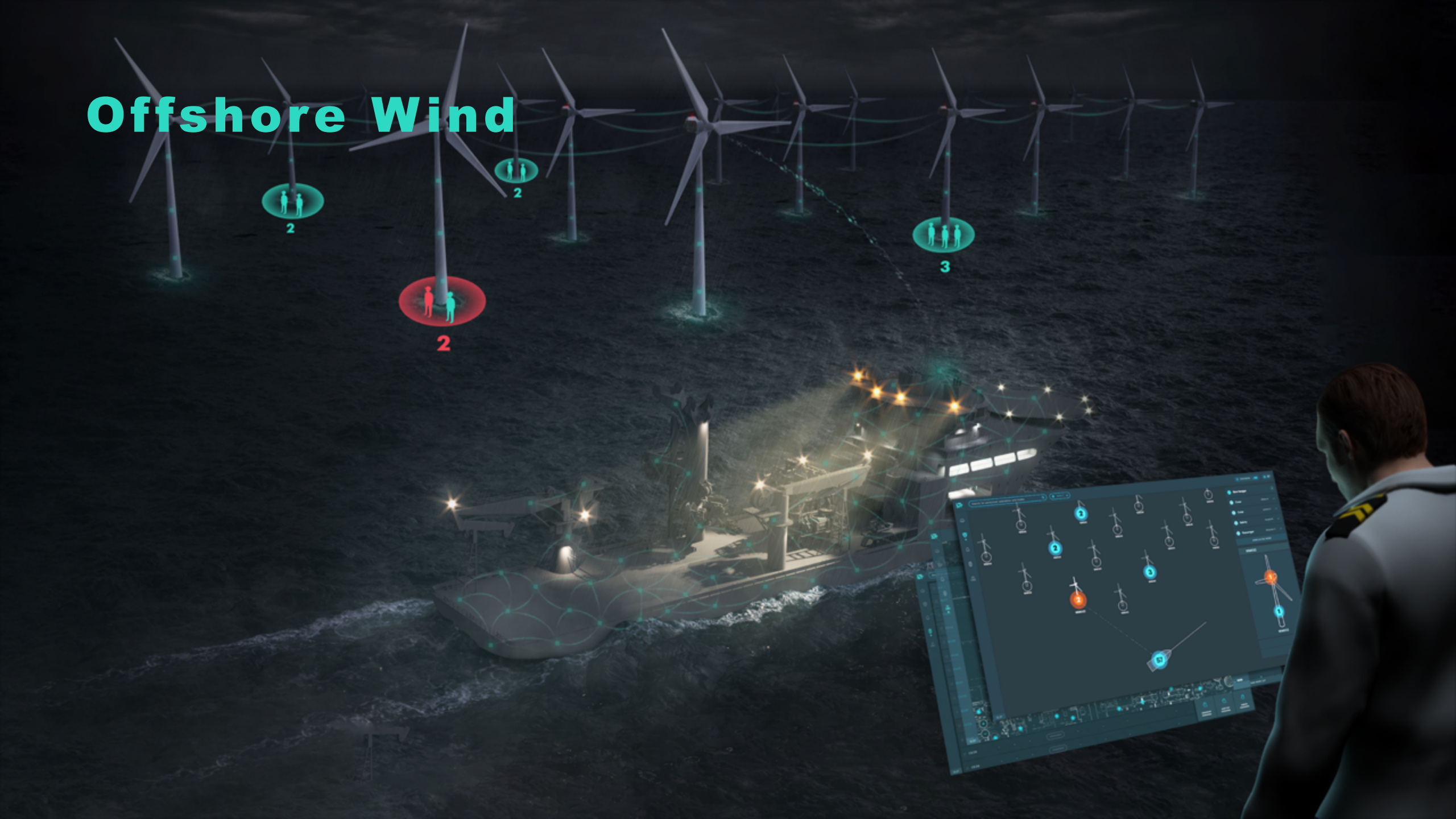
Environmental monitoring



Maritime/Shipping

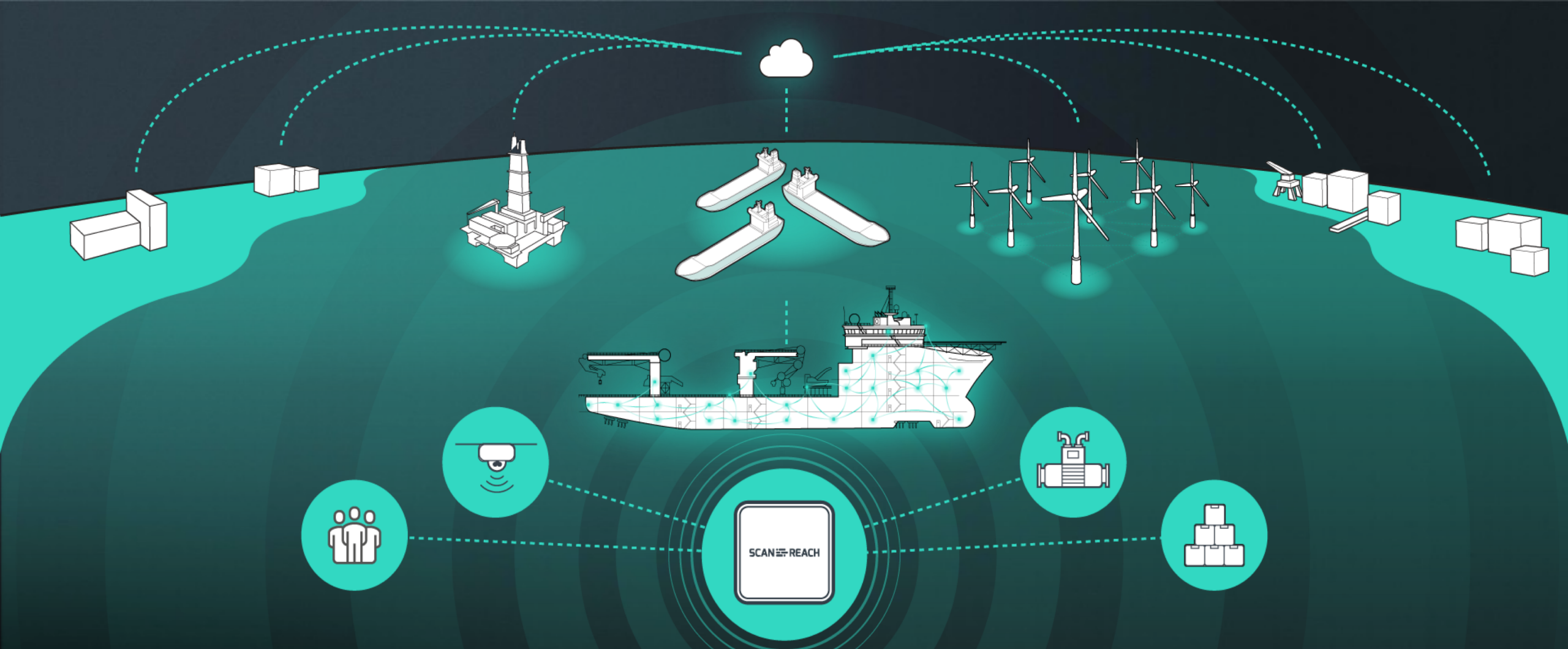


Offshore Wind



Offshore Oil & Gas





The Nodes provides full onboard wireless connectivity and is a true enabler for future digital solutions increasing **safety**, **performance** and **sustainability** of maritime operations.

SAFETY

- Full Personnel Onboard Control
- Fall detection
- MOB (Man Over Board)
- Gangway control
- Easy integration with other systems

PERFORMANCE

- Instant monitoring on ship and shore
- Condition based monitoring
- Cloud connection
- Integration with partners

SUSTAINABILITY

- Fuel monitoring
- Environmental sensing
- Data analytics



Startup
Scaleup
Global Commercialization

Thank You!

jge@scanreach.com

SCAN  REACH