

UNITECH

Energy Group



Strategy map



BUSINESS STRATEGY



6 CLEAN WATER AND SANITATION



7 AFFORDABLE AND CLEAN ENERGY



8 DECENT WORK AND ECONOMIC GROWTH



9 INDUSTRY, INNOVATION AND INFRASTRUCTURE



10 REDUCED INEQUALITIES



11 SUSTAINABLE CITIES AND COMMUNITIES



UNITECH
Energy Group

12 RESPONSIBLE CONSUMPTION AND PRODUCTION



13 CLIMATE ACTION



14 LIFE BELOW WATER



15 LIFE ON LAND



16 PEACE AND JUSTICE
STRONG INSTITUTIONS



17 PARTNERSHIPS FOR THE GOALS



UNITECH

nmec
NORWEGIAN MARINE & ENERGY COMPLEX



Norwegian Centres of Expertise
NCE Maritime CleanTech

OFFSHOREWIND
NORWEGIAN OFFSHORE WIND CLUSTER

The logo icon for GCE Ocean Technology, consisting of a grid of blue and teal squares of varying sizes.
**GCE
Ocean
Technology**

**SUSTAINABLE
ENERGY** | **NORWEGIAN
CATAPULT
CENTRE**



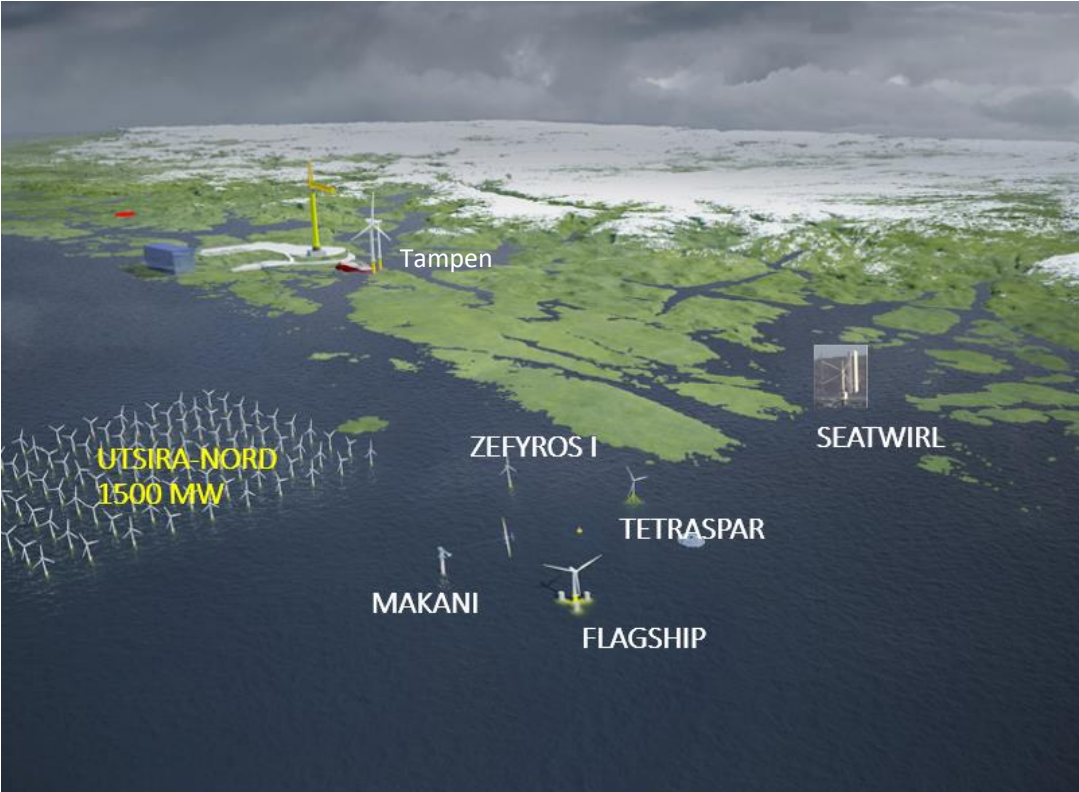
*- establish a leading global supply chain
for floating offshore wind farms.*

Arvid Nesse
Cluster Manager
arvid.nesse@offshore-wind.no

Frank Emil Moen
Communication Manager
fem@energyinnovation.no

OFFSHOREWIND
Norwegian Offshore Wind Cluster 
www.offshore-wind.no

NÆRMARKED 50 MILLIARDER 2019-2025



NÆRMARKED 2000 MILLIARDER 2025-2050



OPENING OF UTSIRA-NORD AND SØRLIGE NORDSJØ II – JUNI 2020

4,5 GW



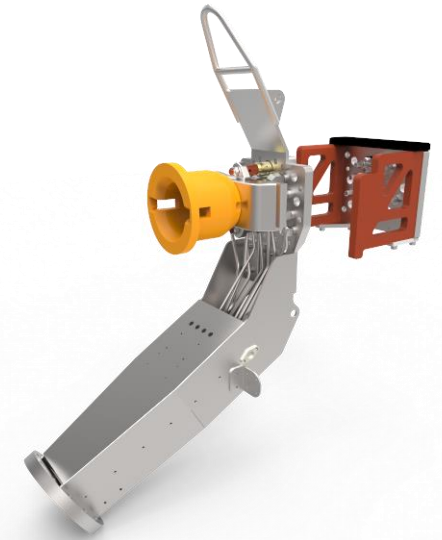
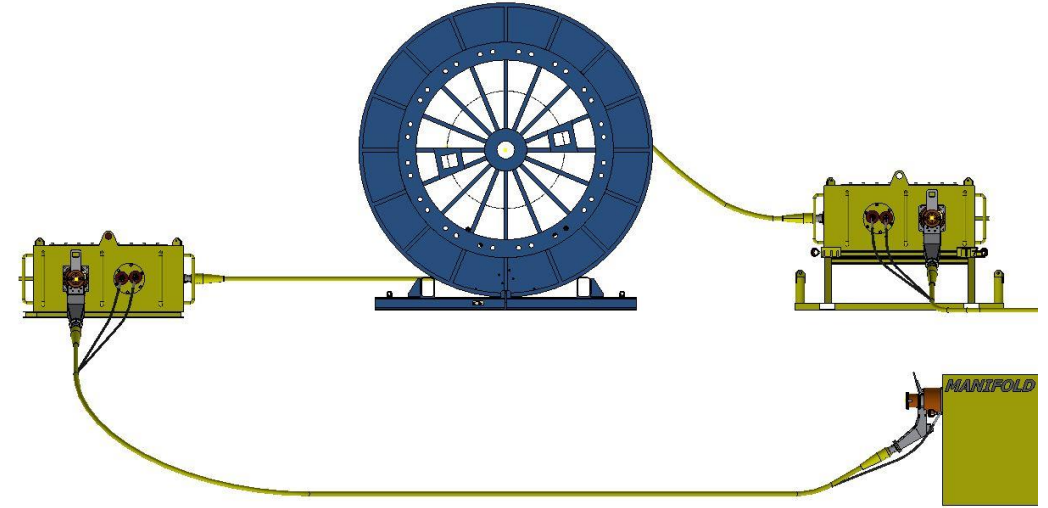
UNITECH OFFSHORE



ZEPHYROS OCEAN



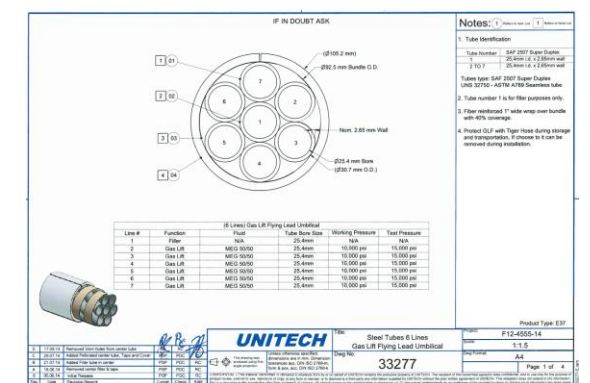
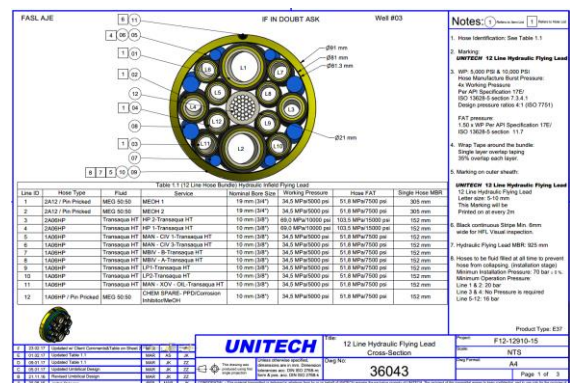
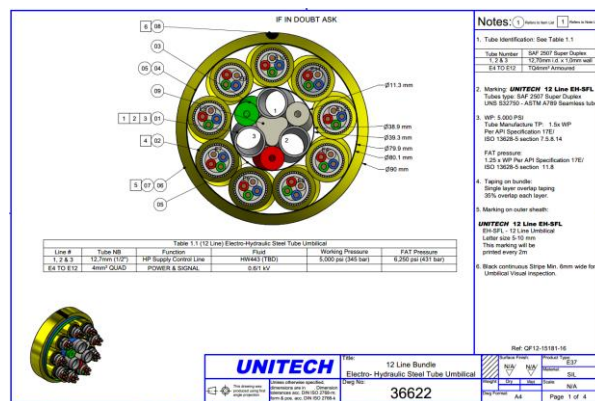
Track record since 1984

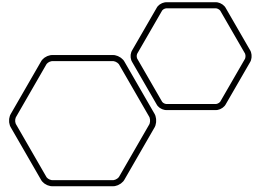


UNITECH Stord

DESIGN, ENGINEERING,
MANUFACTURING,
ASSEMBLY AND TESTING
ALL IN-HOUSE



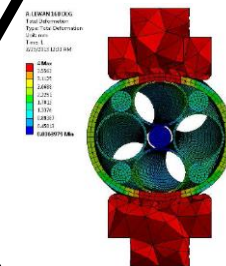
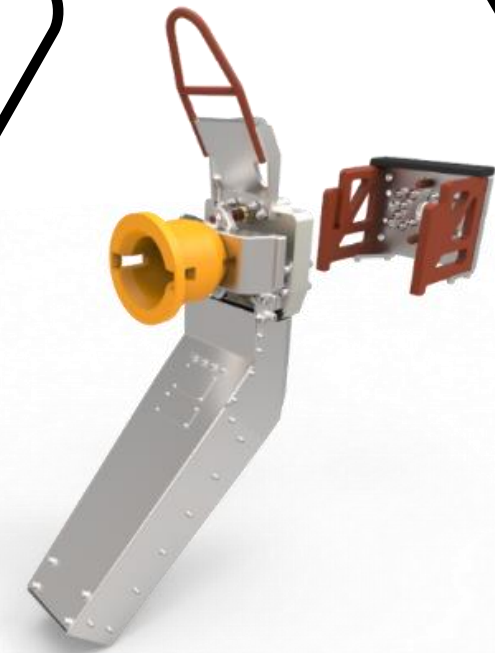
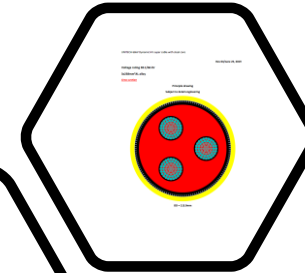
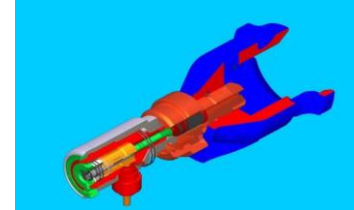


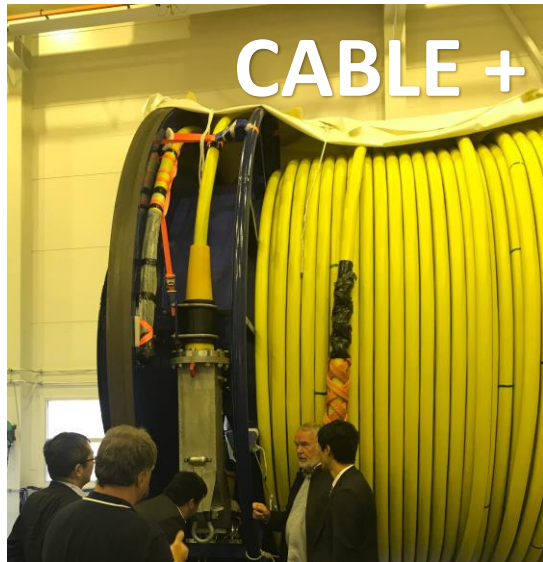


UNITECH Technology Development

Groundbreaking Innovations

- World #01 Steel Tube Umbilical
- World #01 MQC Terminator Bravo
- World #01 Integrated control pod and stab plate
- World #01 Advanced Medium Voltage Connector
- World #01 Subsea Electric Hydraulic Power unit
- World #01 Super Cable
- Groundbreaking hang-off and connectors





UNITECH takeover of Hywind Demo



SUSTAINABLE ENERGY | **NORWEGIAN CATAPULT CENTRE**

UNITECH ZEPHYROS I

www.unitechenergy.com

OO STAR - FLAGSHIP

IBERDROLA with partners has been awarded major EU funding and top score for building and testing the world largest floating wind turbine FLAGSHIP. To be installed at MetCenter in 2022.

EU

25 m€

Other funding bodies are ENOVA, SIVA, IBERDROLA and Partners

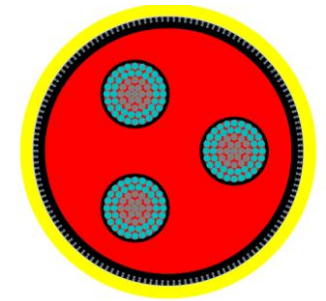
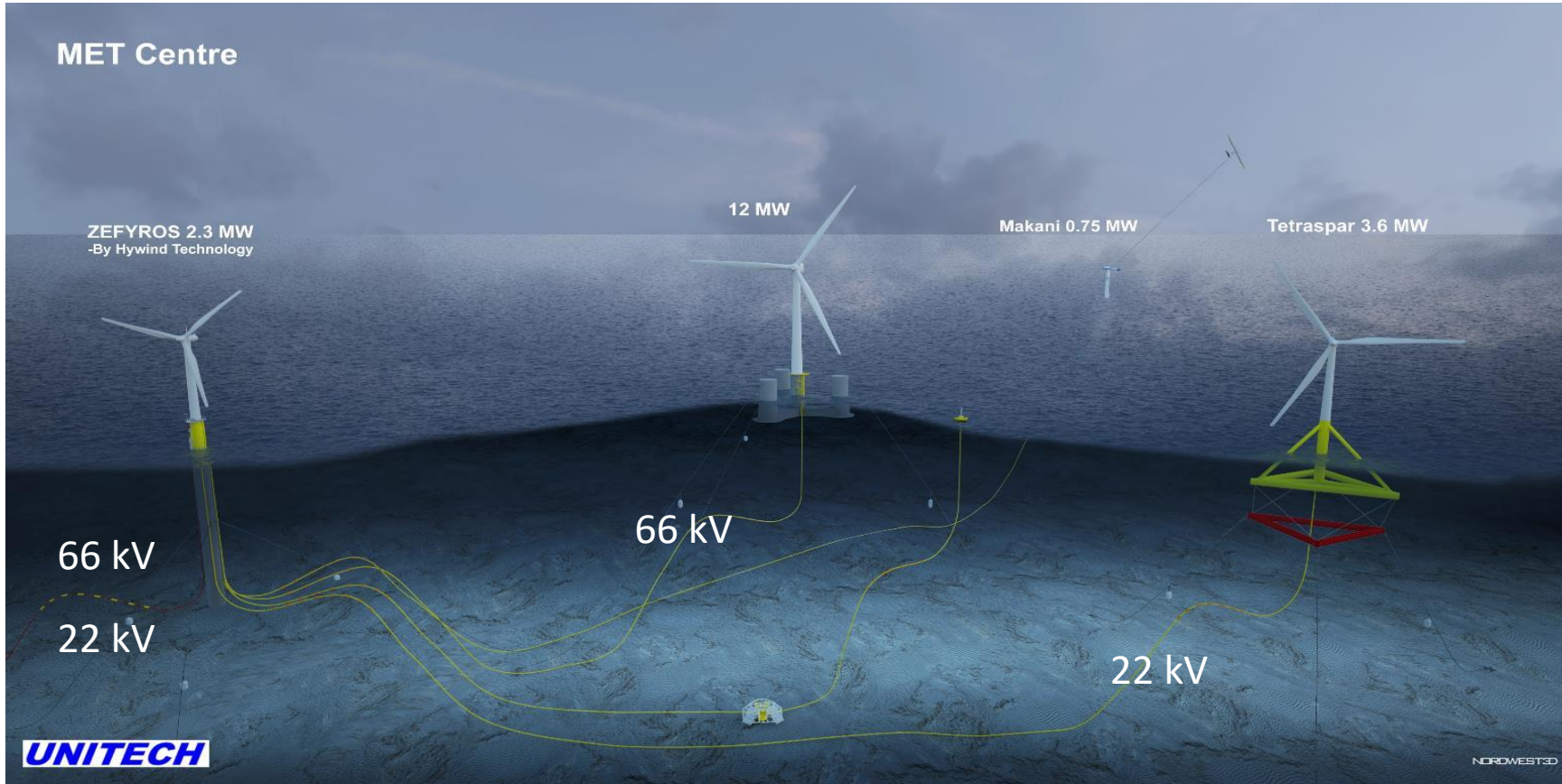
UNITECH scope is 1) Innovative dynamic cable system and 2) O&M of the turbine.



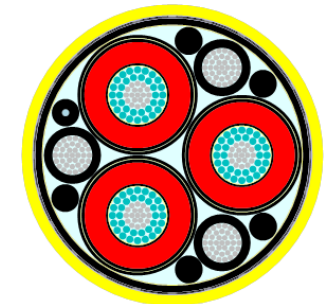
"This project has received funding from the European Research Council (ERC) under the European Union's Horizon 2020 research and innovation programme (grant agreement n° xxxx)".



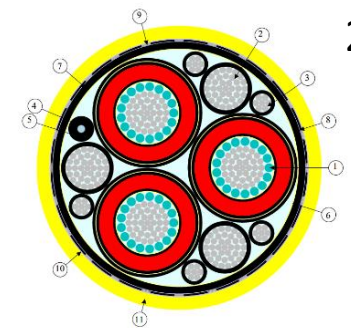
Cable design for 2021 and 2022 installation



66 kV



66 kV



22 kV

Design of a steel core Al conductor (bundle)

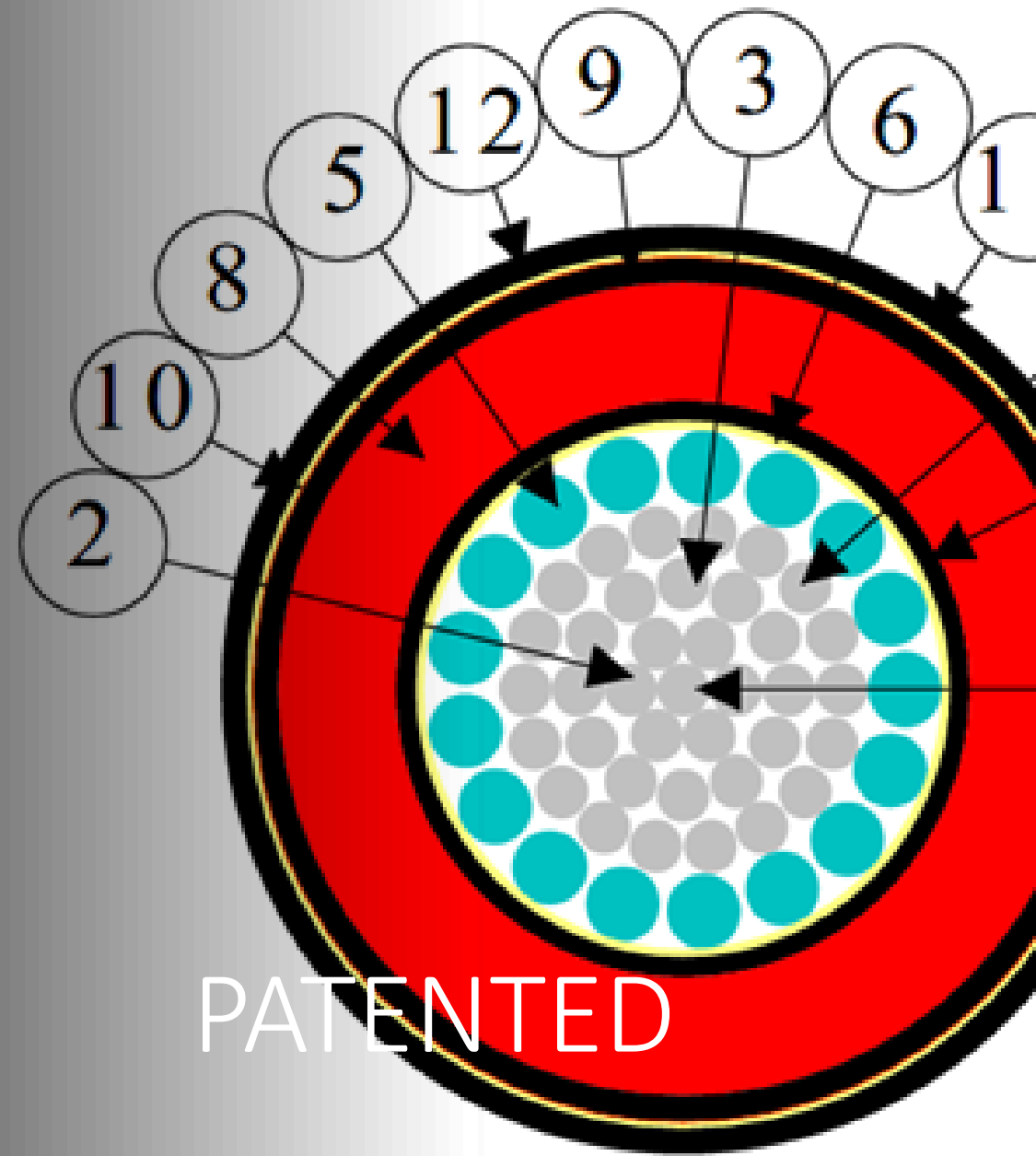
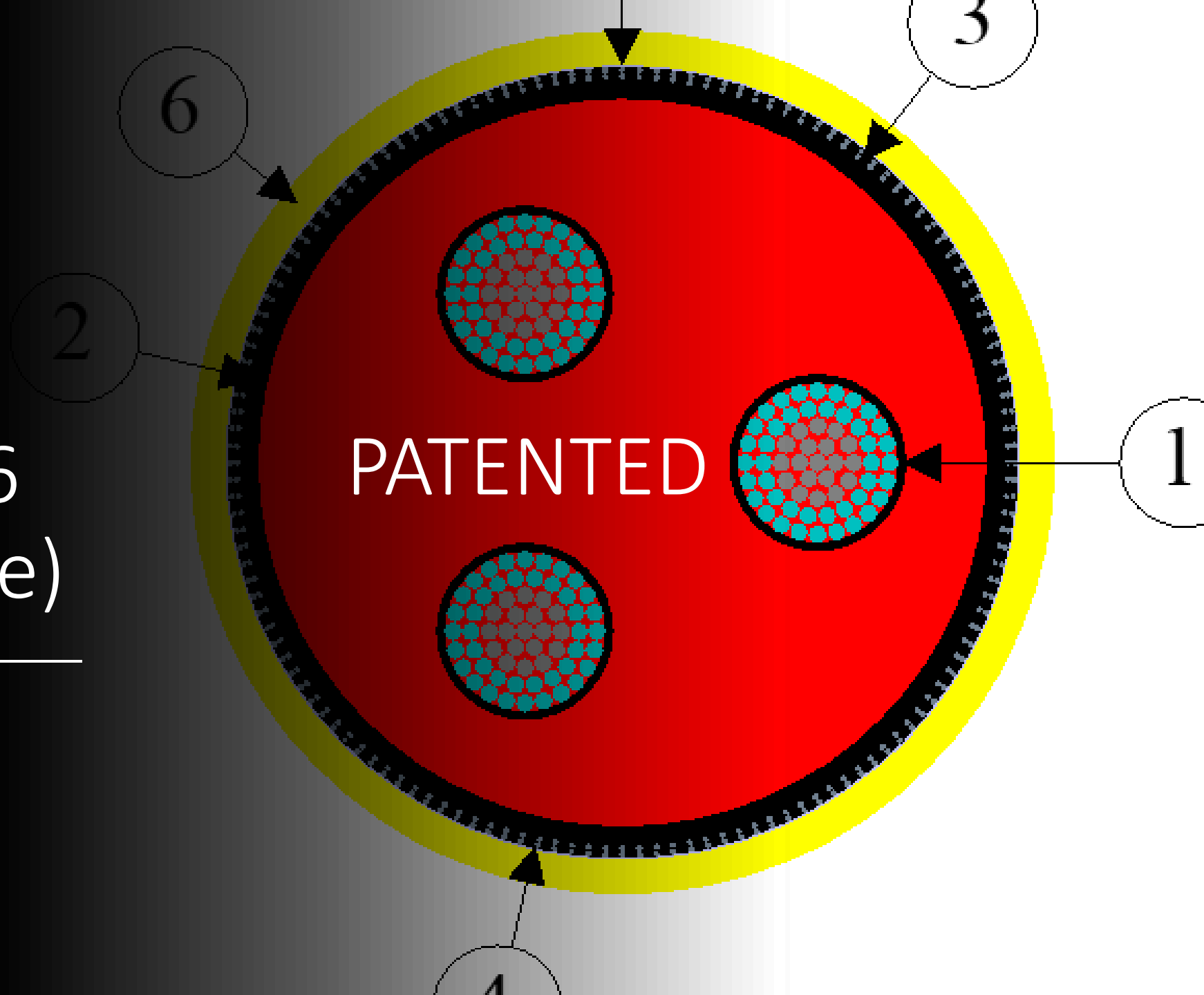
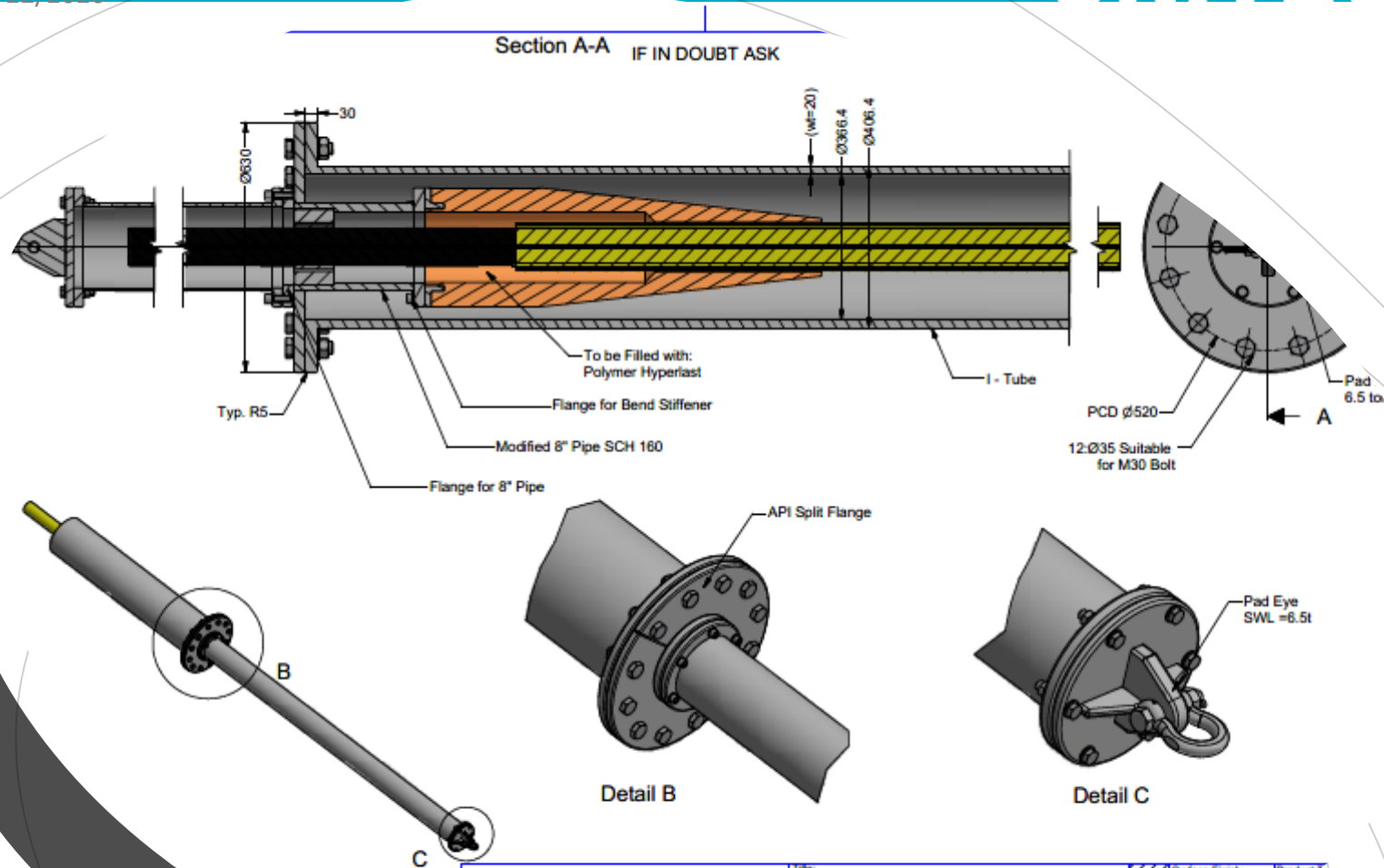


Figure 1: Cross-sectional drawing with position number

Design of a 66 kV (supercable)





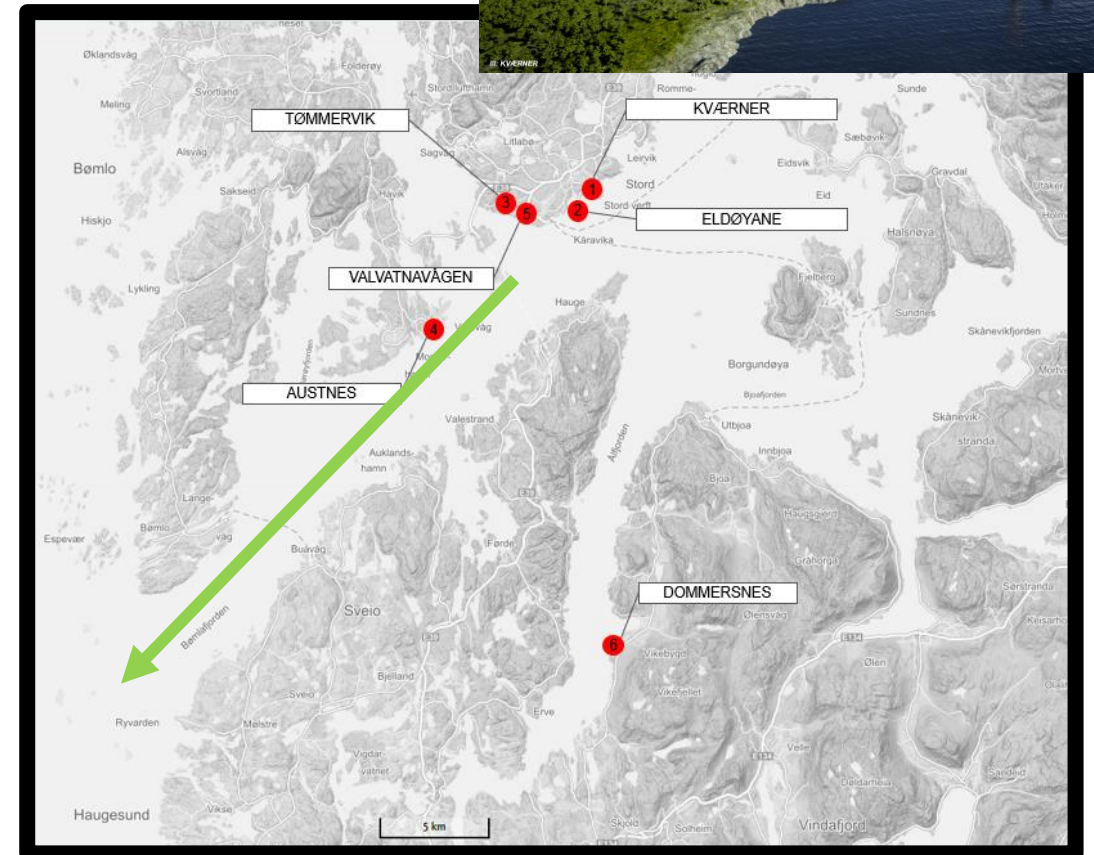
UNITECH Pull-in Head and Hang-off

| | | | | | | |
|---------|-----|----|--|--|------------------------|---------|
| UNITECH | | | Title: Hang off Termination Assy Option 1 | | Surface Finish: NOM | Product |
| MBS | MZA | ZZ | Dwg No: 38994 | | Weight: | Qty |
| MZA | ZZ | 72 | This drawing was produced using first angle projection | | Dwg | |

Unless otherwise specified,
dimensions are in mm. Dimension
tolerances acc. DIN ISO 2768-rt;
form & pos. acc. DIN ISO 2768-k

All material transmitted or delivered in whatever form by or on behalf of UNITECH remains the exclusive property of UNITECH. No part of this drawing or copy, in any form or manner, or to disclose to a third party any information supplied hereunder, is to be used for any purpose other than that for which it was originally intended, without the prior written consent of UNITECH.

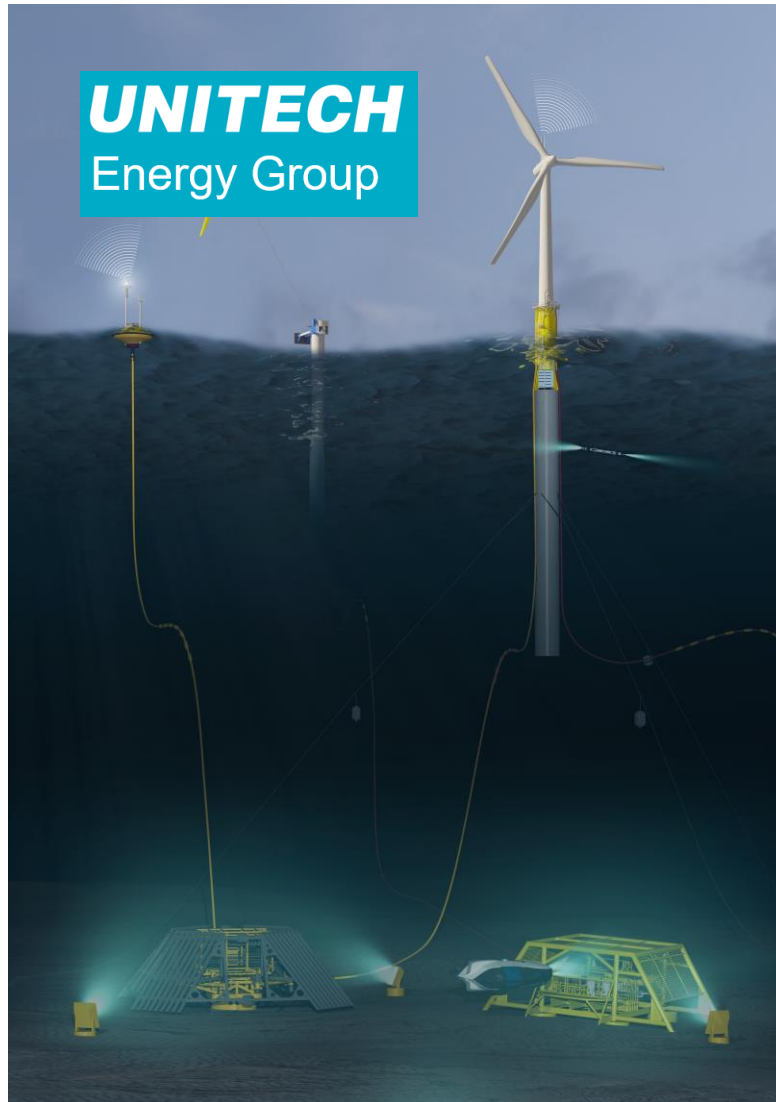
UNITECH Timber Bay



UNITECH

Center for Technology Development &
Vocational School





H₂ GENERATION AND STORAGE JUNE 2021

