



Industrilaboratoriet

The Industrial- and Aquatic Research Laboratory (ILAB),
a foundation established by the Norwegian Government
and organized under the University of Bergen



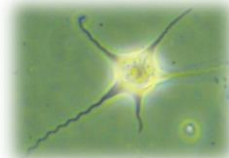
The Aquatic and Industrial Laboratory (ILAB)



- ✱ **Contract laboratory (est.1989)**
- ✱ **Shared facilities (used by commercial companies and public departments)**
- ✱ **>200 trials each year**
- ✱ **Production of experimental fish**
(~ 100 000 pcs. each year)
- ✱ **Continous production of parasites:**
 - Salmon lice, *Lepeophtheirus salmonis*

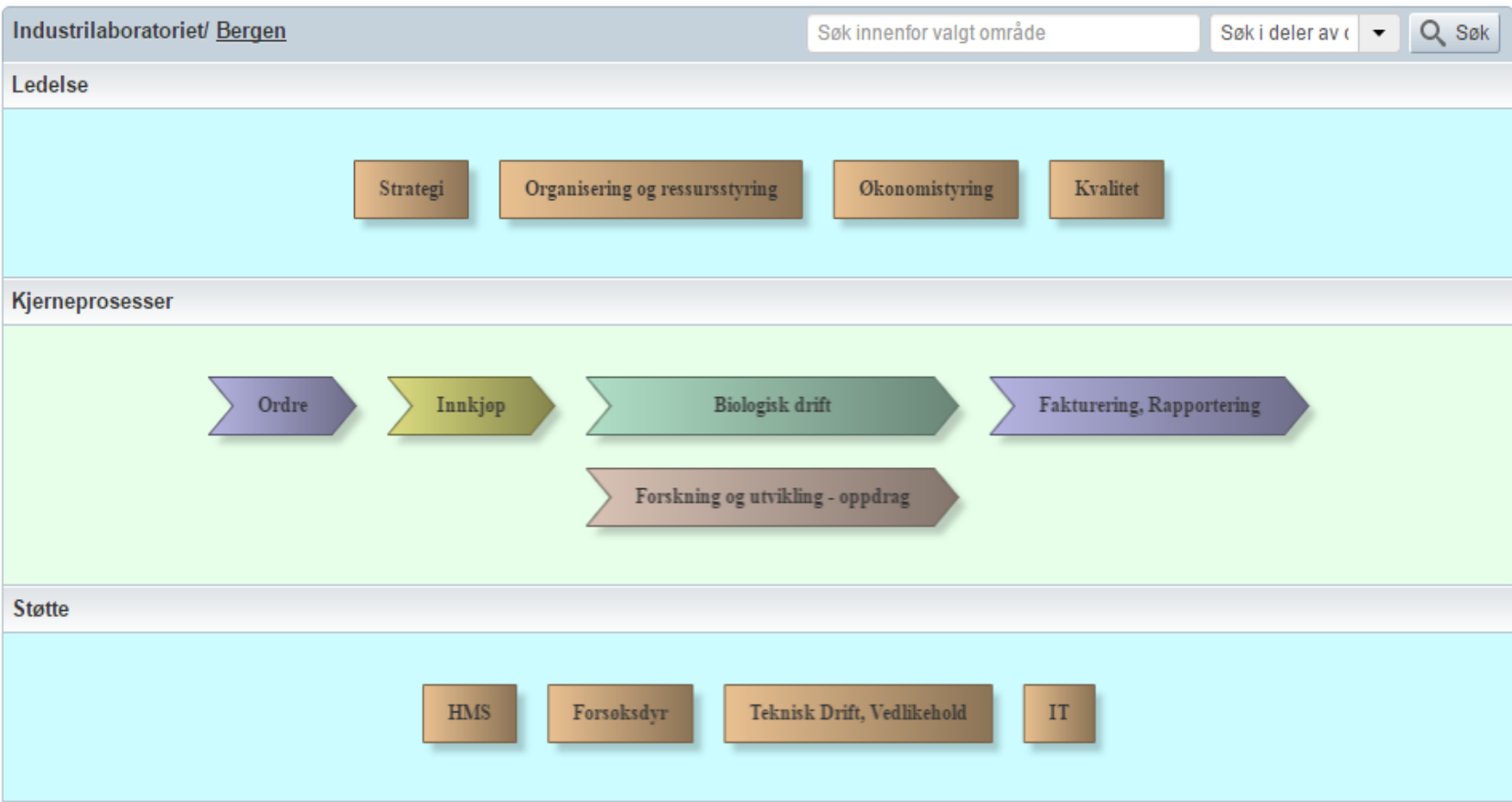


- *Paramoeba perurans*, amoebic gill disease, AGD



Process controlled activity

ISO 9001:2015

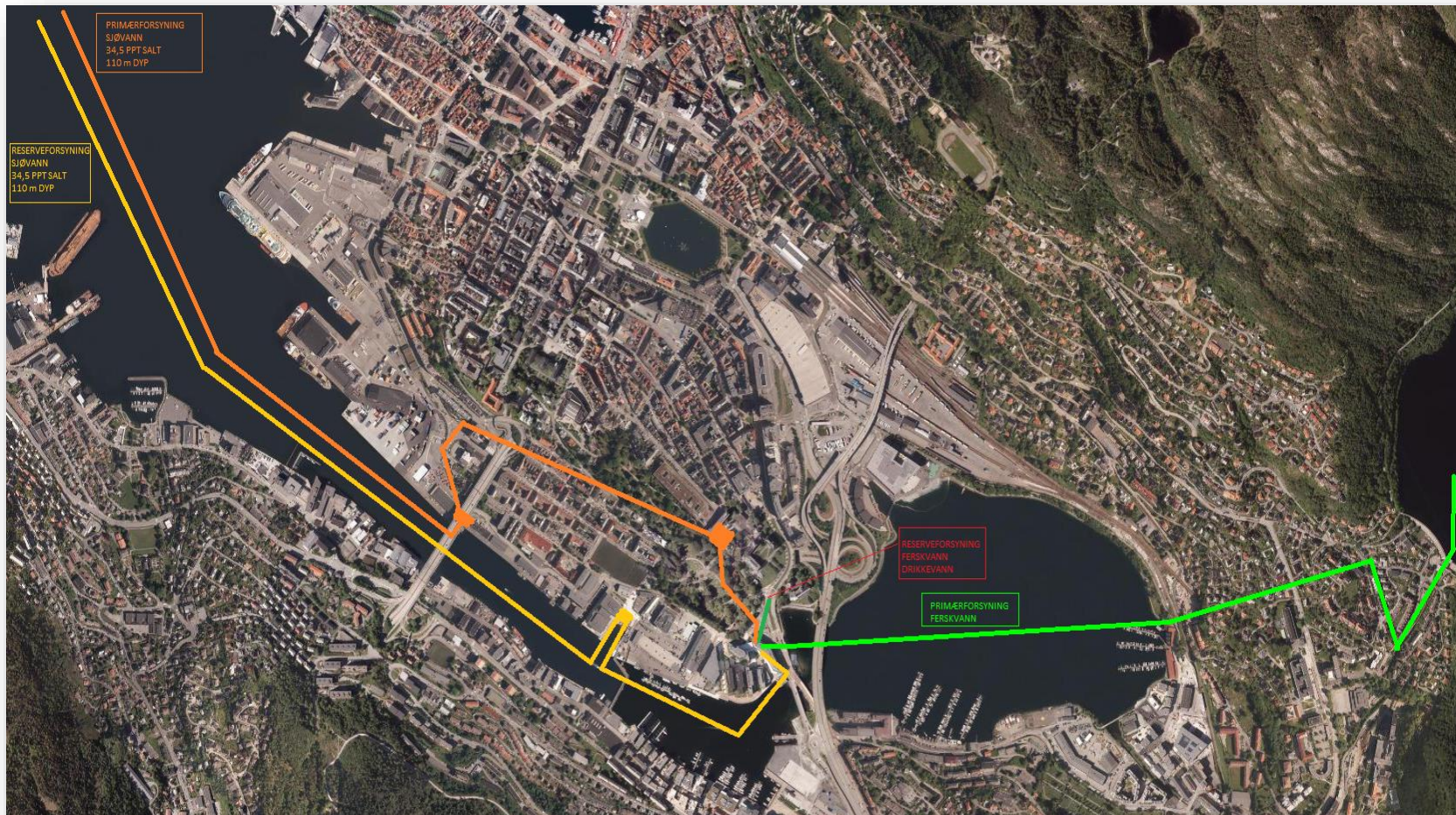




Salt- and freshwater inlet:

- Saltwater from 110 m depth
- 3 km distance from facility
- 20 μ m filters and UV

- Freshwater from same water source that supplies Bergen with drinking water
- ILAB own pipe line since 2008
- 2 km distance from facility

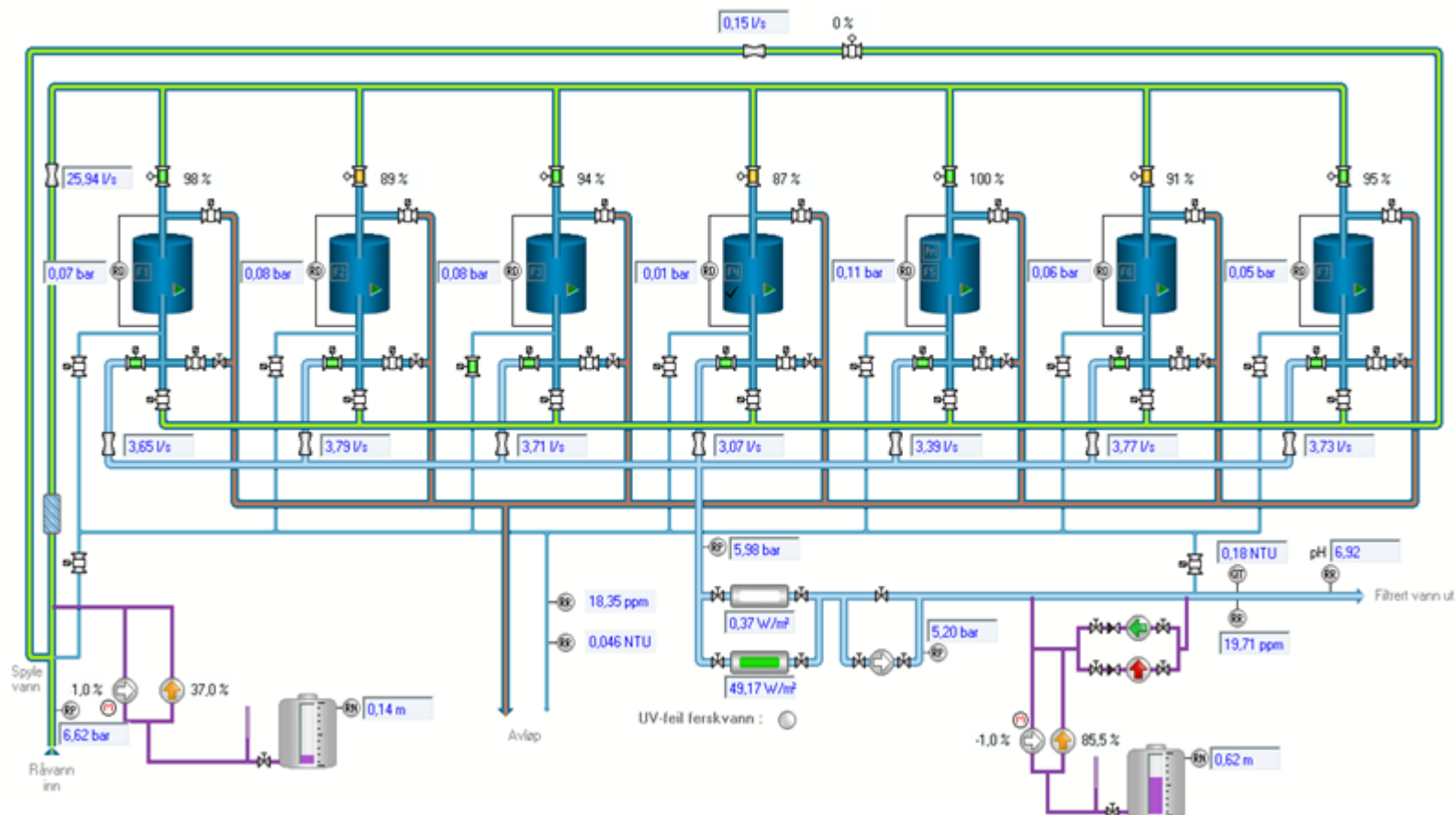




ILAB - Freshwater:

Industrilaboratoriet

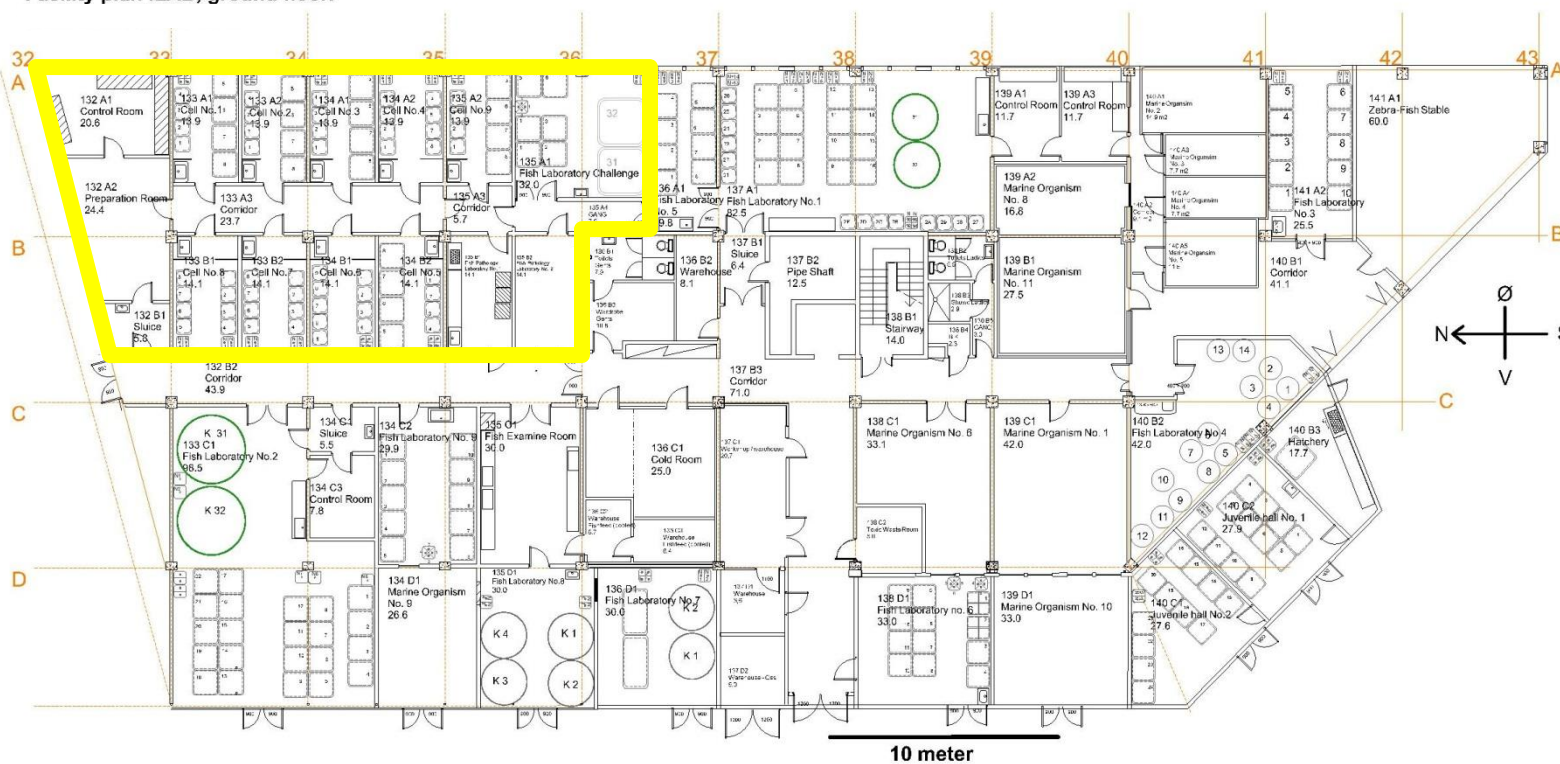
Fil » Funksjoner »





Industrilaboratoriet

Facility plan ILAB, ground floor.





Industrilaboratoriet

ILAB -Marineholmen Research Park:

Aqua facilities:



Production of
experimental fish



VACCINE TESTING

- Safety tests
- Potency tests



FEED TRIALS
SEA LICE TRIALS

Disease facilities:



CHALLENGE EXPERIMENTS

- Strict sanitary barriers
- All agents allowed (also GMO)
- All outlet water is disinfected

CAPACITY

- Temperature range: 4-30 °C
- Salinity: 0-34 ppt
- > 240 units and 120 water qualities
- > 200 trials per year
- ~ 1.500 lice egg strings per year
- ~ 370.000 copepodits per year
- ~ 1.900 psc pre-/adult lice per year
- ~ 20 mill. amoebic cells per year



Industrilaboratoriet

Production of experimental fish

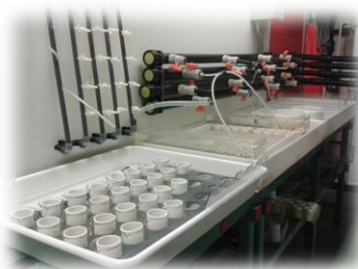
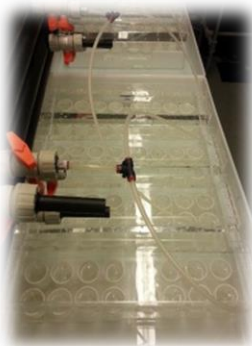
- ☀ Production of experimental fish since 2011
- ☀ ~100 000 each year
- ☀ Brought in as eyed-eggs and hatched at ILAB



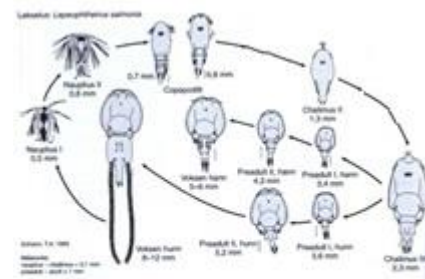
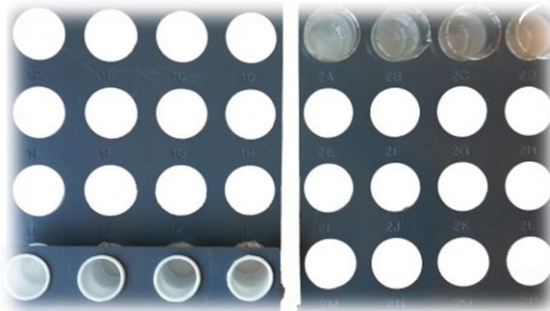
Salmon lice – facility:



Salmon lice hatchery



'In vitro' – studies / bioassays

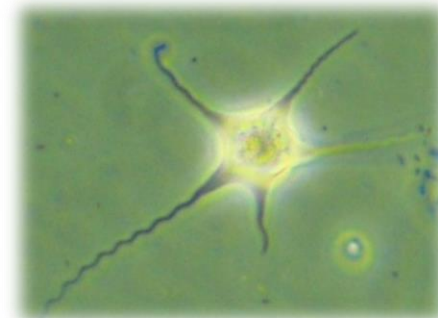
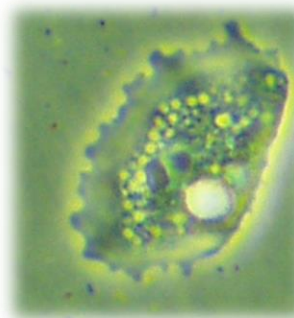
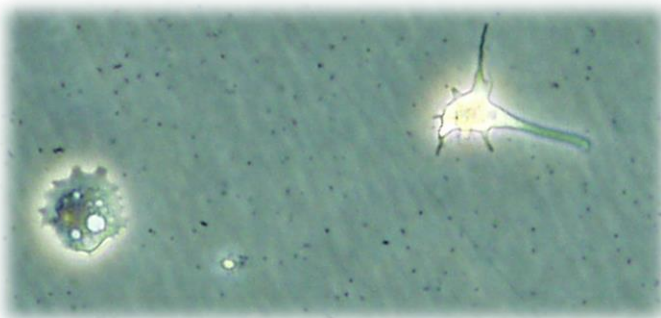


'in vivo' - studies

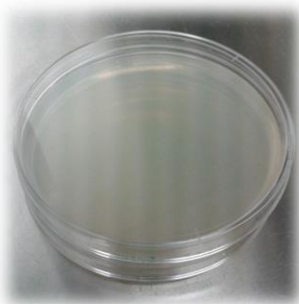


We sell egg strings, copepodites and preadult / adult stages of salmon lice

Amoebic gill disease (AGD) experiments :



'in vitro' - studies



'in vivo' - studies



Industrilaboratoriet

Please visit us on website:

WWW.ILAB.NO

